

# BIOCLEAN CLEARVIEW

Autoclavable Panoramic Goggles

## BCAP

### About

BioClean Clearview Autoclavable Panoramic Goggles have a toughened, anti-scratch, anti-fog lens providing excellent optical clarity even after multiple autoclave cycles. The goggles feature a super-soft frame for comfort and an indirect ventilation system to reduce the risk of contamination entering the controlled environment. The extra wide and deep lens offers the wearer increased field of vision and are ideal for wearing over large eye-glasses.

### Specifications

**MATERIAL:**

Thermoplastic rubber frame, toughened polycarbonate lens, latex-free silicone head band with polypropylene hooks

**COLOUR:**

White frame and translucent strap

**CLASSIFICATION:**

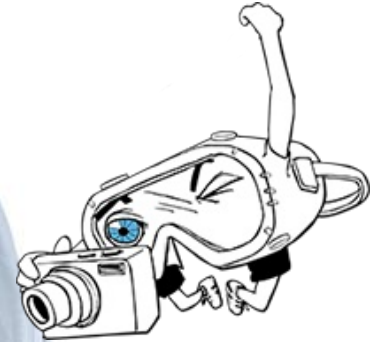
EN 166:2001 Optical Class 1

**COMPATIBILITY:**

ISO Class 4 & EU GMP Grade A

### Features

- Toughened anti-scratch, anti-fog lens
- Super-soft frame
- Indirect ventilation system
- Ideal for wearing over eye-glasses
- Non-linting latex-free head band
- Tested to withstand 40 autoclave cycles of 30 minutes duration at 121°C/250°F (under laboratory conditions)
- Anti-fog performance remaining for up to 25 cycles with no degradation (under laboratory conditions)



Lens Gogglestrong® represents  
BioClean's range of GMP  
compatible Cleanroom goggles



ANTI-FOG LENS

OPTICALLY CORRECT

INDIRECT VENTILATION SYSTEM

EXTRA WIDE FIELD OF VISION

## Quality Standards

- Manufactured in a facility holding ISO 9001:2015
- Processed in an NEBB certified ISO Class 4 cleanroom environment
- Conforms to Category 2 – Personal Protective Equipment PPE Regulation (EU)2016/425
- Complies with requirements of EN 166:2001 standard for personal eye protection
- Tested to ANSI/ISEA Z87.1-2010, the American National Standard for Occupational and Educational Personal Eye and Face Protection Devices (BCAP-1 Goggle Style Only)

### STERILIZATION:

Supplied non-sterile. To be autoclaved at 121°C/250°F for 30 minutes.

## Shelf Life & Storage

Five (5) years from date of manufacture. Store in a dry, cool place (<40°C) away from direct sunlight and fluorescent light.

## Physical Properties

Total Weight (± 2g)	103 g
Lens Thickness (± 0.3mm)	2.1mm
Bridge Width (± 0.5mm)	50mm
Bridge Height (±0.5mm)	25mm
Overall Width (hinge to hinge)(±3mm)	160mm
Overall Height (± 3mm)	80mm

## Explanation of Markings

REQUIRED MARKINGS	MARKINGS ON FRAME	MEANING
Manufacturer's Identification Mark	BioClean	BioClean™
Standard Number	EN166	European Standard on Personal Eye Protection
Field of Use	BT	Medium energy impact at extremes of temperature
Conformity Mark	CE	Conformity with European Standards

## TO ORDER

### Re-order code

BCAP  
BCAP-1  
BCAP-SL  
BCAP-SS

### Size

Goggle  
ANSI Compliant Goggle  
Replacement Lens  
Replacement Strap

---

### Packing

Goggle (BCAP & BCAP-1):

One piece per sealed PE bag (to be removed prior to autoclaving); 12 bags per inner box; five boxes per lined carton (60 pieces).

Replacement Lens (BCAP-SL):

One piece per sealed PE bag; 10 bags per inner box; 10 boxes per lined carton (100 pieces)

Replacement Strap (BCAP-SS):

25 pieces per sealed PE bag; two bags per inner box; 10 boxes per lined carton (500 pieces)

For additional information visit us at [www.bioclean.com](http://www.bioclean.com), or call us at +44 1638 663338

#### Nitritex Ltd

Minton Enterprise Park  
Oaks Drive  
Newmarket, Suffolk  
CB8 7YY  
United Kingdom

BCAP/1901/PDS35

Neither this document nor any other statement made herein by or on behalf of Ansell should be construed as a warranty of merchantability or that any Ansell product is fit for a particular purpose. Ansell assumes no responsibility for the suitability or adequacy of an end user's selection of goggles for a specific application.

Ansell, ® and TM are trademarks owned by Ansell Limited or one of its affiliates. © 2012 – 2018 Ansell Limited. All Rights Reserved.

The Ansell logo consists of the word "Ansell" in a bold, blue, sans-serif font. A green swoosh underline is positioned beneath the letters "n", "s", and "e".