

NRL

LATEX

# AlphaTec®

ADVANCED CHEMICAL PROTECTION

MEDIUM WEIGHT:  
55-100/55-102/55-104  
55-106/55-108/55-110

HEAVY WEIGHT:  
55-101/55-103/55-105  
55-107/55-109/55-111

MITTEN:  
55-113

# VALIDATION PACK

Ansell

## TABLE OF CONTENTS

1. Global Product Datasheet	3
2. Technical Datasheet	9
3. CE Declaration of Product Conformity	22
4. CE Certificate	35
5. Certificate of Conformance	41
6. BSE/TSE Declaration	54
7. FDA Positive Statement	55
8. Allergen Statement	56
9. Permeation Breakthrough Time	57
10. Packaging Data	58
11. Packaging and Label Explanation	59
12. Shelflife Statement	60
13. Quality Management ISO 9001:2008	61
14. Instructions for Use	62
15. Product Portfolio	63

# VALIDATION PACK

## Global Product Datasheet

# AlphaTec®

ADVANCED CHEMICAL PROTECTION

## NATURAL RUBBER LATEX MEDIUM WEIGHT ISOLATOR BOX GLOVE

**NRL**  
LATEX

### A COMFORTABLE CHOICE IN PHYSICALLY DEMANDING WORK ENVIRONMENTS

- Latex construction provides a good defense against tears, abrasions, cuts and punctures
- Translucent and unlined for effective cleaning

- Effective protection for medium duty physical environments, especially for defense against abrasions and tears
- The medium thickness (20mil/0.51mm) increases dexterity, which improves the ability to manipulate objects
- Available port sizes fit most isolator glove boxes

Style	55-100 / 102 / 104 106 / 108 / 110
-------	---------------------------------------

**Ansell**

## NATURAL RUBBER LATEX MEDIUM WEIGHT (20 mil/0.51 mm) ISOLATOR BOX GLOVE

### TECHNICAL DATA SHEET

#### PRODUCT INFORMATION

Material	Natural rubber latex
Color	Natural
Glove Design	Ambidextrous hand shape, smooth grip
Glove Description	For protection in medium duty work environments. Highly durable in physical demanding applications. Resistant to most acids, alkalis, alcohols, aldehydes and ketones. The latex formulation makes the gloves an affordable choice.
Audit Standards	Manufacturing facility registered to ISO 9001 and ISO 14001
Operating Temperature	Range of -30°C to 50°C
Applications	Pharmaceutical, chemical, and electronic industries
Quality Control	Compliant with EN388, EN420 and EN374
Packaging	10 pairs in black vacuum-sealed bags per case
Storage	Store in cool dry place, temperature 15°C to 30°C, away from direct sunlight and sources of heat.
Country of Origin	Malaysia



#### PHYSICAL PROPERTIES

PROPERTY	TYPICAL VALUES		TESTING METHOD
Freedom from holes (inspection level I)	AQL <0.65		EN 374-2
Palm thickness single wall	20 mil/0.51 mm		EN 420
	<b>BEFORE AGING</b>	<b>AFTER AGING</b>	
Ultimate tensile strength	14 MPa, min	9.1 MPa, min	BS 903 / ISO 37:2005
Elongation at break	600%, min	480%, min	BS 903 / ISO 37:2005
Modulus @ 500%	5.5 MPa, max	5.5 MPa, max	BS 903 / ISO 37:2005
Force at break	23 N, max	15 N, max	BS 903 / ISO 37:2005

#### TESTING INFORMATION

<b>EN374</b>
6 K-Sodium hydroxide 40%
<b>EN388</b>
3 Abrasion
0 Cut
1 Tear
0 Puncture
<b>EN 420</b>
5 Dexterity

#### ORDERING INFORMATION

Style	Port Size (in/mm)	Length (in/mm)	SIZE	8	9	10
55-100	6 in/150 mm	28 in/711 mm	ASPEN	256258	256259	256260
			ORACLE	114937	114938	114939
55-102	7 in/180 mm	28 in/711 mm	ASPEN	-	256264	256265
			ORACLE	-	114943	114944
55-104	8 in/200 mm	32 in/813 mm	ASPEN	-	256268	256269
			ORACLE	-	114947	114948
55-106	9 in/230 mm	31 in/787 mm	ASPEN	-	256272	256273
			ORACLE	-	114951	114952
55-108	10 in/250 mm	32 in/813 mm	ASPEN	-	256276	256277
			ORACLE	-	114955	114956
55-110	12 in/300 mm	32 in/813 mm	ASPEN	-	256279	256280
			ORACLE	-	114958	114959

CE 0086



For additional information visit us at [www.ansell.com](http://www.ansell.com), or call us at  
 Asia Pacific: +60 3 83106688  
 Australia: +61 3 9270 7270  
 Europe: +32 2 528 74 00  
 North & Latin America: +1800 800 0444

\* and ™ are trademarks owned by Ansell Limited or one of its affiliates.  
 © 2016 All Rights Reserved.

## AlphaTec®

ADVANCED CHEMICAL PROTECTION

### NATURAL RUBBER LATEX HEAVY WEIGHT ISOLATOR BOX GLOVE

NRL

LATEX

## A COMFORTABLE CHOICE IN PHYSICALLY DEMANDING WORK ENVIRONMENTS

- Latex construction provides a good defense against tears, abrasions, cuts and punctures
- Translucent and unlined for effective cleaning

- Effective protection for heavy duty physical environments, including great defense against tears and abrasions and good protection against cuts and punctures
- The heavyweight thickness (30 mil/0.76mm) increases durability, augmenting chemical and physical resistance
- Available port sizes fit most isolator glove boxes

Style

55-101 / 103 / 105  
107 / 109 / 111

**Ansell**

## NATURAL RUBBER LATEX HEAVY WEIGHT (30 mil/0.76 mm) ISOLATOR BOX GLOVE

### TECHNICAL DATA SHEET

#### PRODUCT INFORMATION

Material	Natural rubber latex
Color	Natural
Glove Design	Ambidextrous hand shape, smooth grip
Glove Description	For protection in heavy duty work environments. Highly durable in physical demanding applications. Resistant to most acids, alkalis, alcohols, aldehydes and ketones. The latex formulation makes the gloves an affordable choice.
Audit Standards	Manufacturing facility registered to ISO 9001 and ISO 14001
Operating Temperature	Range of -30°C to 50°C
Applications	Pharmaceutical, chemical, and electronic industries
Quality Control	Compliant with EN388, EN420 and EN374
Packaging	10 pairs in black vacuum-sealed bags per case
Storage	Store in cool dry place, temperature 15°C to 30°C, away from direct sunlight and sources of heat.
Country of Origin	Malaysia



#### PHYSICAL PROPERTIES

PROPERTY	TYPICAL VALUES		TESTING METHOD
Freedom from holes (inspection level I)	AQL <0.65		EN 374-2
Palm thickness single wall	30 mil/0.76 mm		EN 420
	<b>BEFORE AGING</b>	<b>AFTER AGING</b>	
Ultimate tensile strength	14 MPa, min	9.1 MPa, min	BS 903 / ISO 37:2005
Elongation at break	600%, min	480%, min	BS 903 / ISO 37:2005
Modulus @ 500%	5.5 MPa, max	5.5 MPa, max	BS 903 / ISO 37:2005
Force at break	23 N, max	15 N, max	BS 903 / ISO 37:2005

#### TESTING INFORMATION

<b>EN374</b>
6 K-Sodium hydroxide 40%
<b>EN388</b>
3 Abrasion
1 Cut
2 Tear
1 Puncture
<b>EN 420</b>
5 Dexterity

#### ORDERING INFORMATION

Style	Port Size (in/mm)	Length (in/mm)	SIZE	8	9	10
55-101	6 in/150 mm	28 in/711 mm	ASPEN	256261	256262	256263
			ORACLE	114940	114941	114942
55-103	7 in/180 mm	28 in/711 mm	ASPEN	-	256266	256267
			ORACLE	-	114945	114946
55-105	8 in/200 mm	32 in/813 mm	ASPEN	-	256270	256271
			ORACLE	-	114949	114950
55-107	9 in/230 mm	31 in/787 mm	ASPEN	-	256274	256275
			ORACLE	-	114953	114954
55-109	10 in/250 mm	32 in/813 mm	ASPEN	-	-	256278
			ORACLE	-	-	114957
55-111	12 in/300 mm	32 in/813 mm	ASPEN	-	256281	256282
			ORACLE	-	114960	114961

CE 0086



For additional information visit us at [www.ansell.com](http://www.ansell.com), or call us at  
 Asia Pacific: +60 3 83106688  
 Australia: +61 3 9270 7270  
 Europe: +32 2 528 74 00  
 North & Latin America: +1800 800 0444

\* and ™ are trademarks owned by Ansell Limited or one of its affiliates.  
 © 2016 All Rights Reserved.

## AlphaTec®

ADVANCED CHEMICAL PROTECTION

**NATURAL RUBBER  
LATEX MITTEN  
ISOLATOR BOX GLOVE**

NRL

LATEX

F

### **A COMFORTABLE CHOICE IN PHYSICALLY DEMANDING WORK ENVIRONMENTS**

- Latex construction provides a good defense against tears, abrasions, cuts and punctures
- Translucent and unlined for effective cleaning

- Mitten shape provides effective protection for major risk environments
- Protective defense against abrasions and tears
- The medium thickness (20mil/0.51mm) increases dexterity

Style

55-113

**Ansell**

## NATURAL RUBBER LATEX MITTEN (20 mil/0.51 mm) ISOLATOR BOX GLOVE

### TECHNICAL DATA SHEET

#### PRODUCT INFORMATION

Material	Natural rubber latex
Color	Natural
Glove Design	Ambidextrous hand shape, smooth grip
Glove Description	For protection in medium duty work environments. Highly durable in physical demanding applications. Resistant to most acids, alkalis, alcohols, aldehydes and ketones. The latex formulation makes the gloves an affordable choice.
Audit Standards	Manufacturing facility registered to ISO 9001 and ISO 14001
Operating Temperature	Range of -30°C to 50°C
Applications	Pharmaceutical, chemical, and electronic industries
Quality Control	Compliant with EN388, EN420 and EN374
Packaging	10 pairs in black vacuum-sealed bags per case
Storage	Store in cool dry place, temperature 15°C to 30°C, away from direct sunlight and sources of heat.
Country of Origin	Malaysia



#### PHYSICAL PROPERTIES

PROPERTY	TYPICAL VALUES		TESTING METHOD
Freedom from holes (inspection level I)	AQL <0.65		EN 374-2
Palm thickness single wall	20 mil/0.51 mm		EN 420
	<b>BEFORE AGING</b>	<b>AFTER AGING</b>	
Ultimate tensile strength	14 MPa, min	9.1 MPa, min	BS 903 / ISO 37:2005
Elongation at break	600%, min	480%, min	BS 903 / ISO 37:2005
Modulus @ 500%	5.5 MPa, max	5.5 MPa, max	BS 903 / ISO 37:2005
Force at break	23 N, max	15 N, max	BS 903 / ISO 37:2005

#### TESTING INFORMATION

<b>EN374</b>
6 K-Sodium hydroxide 40%
<b>EN388</b>
3 Abrasion
0 Cut
1 Tear
0 Puncture
<b>EN 420</b>
5 Dexterity

#### ORDERING INFORMATION

Style	Port Size (in/mm)	Length (in/mm)	SIZE	10
55-113	8 in/200 mm	32 in/813 mm	ASPEN	256284
			ORACLE	114963

CE 0086



For additional information visit us at [www.ansell.com](http://www.ansell.com), or call us at  
 Asia Pacific: +60 3 83106688  
 Australia: +61 3 9270 7270  
 Europe: +32 2 528 74 00  
 North & Latin America: +1800 800 0444

\* and ™ are trademarks owned by Ansell Limited or one of its affiliates.  
 © 2016 All Rights Reserved.



## Technical Datasheet

# AlphaTec® 55-100

# TECHNICAL DATASHEET

## Special Purpose

Print date 09-06-2015

### Glove material

- Natural rubber latex (Coating material)

### Possible Harmful ingredients

#### Sensitizers

- Natural rubber proteins
- Parabens
- Zinc Diethyldithiocarbamate

Only a very small number of users may be sensitised to this ingredient in the glove and hence may develop irritant and/or allergic contact reactions.

#### Reach Regulation 1907/2006

For more information, please consult the REACH statement on the Ansell website

### Properties

#### EN Test Data

##### Liquidproofness:

Acceptable Quality Level 0.65 or EN performance level 3

##### Chemical permeation:

For more information on chemical permeation, please consult Ansell website

##### Abrasion resistance:

Performance level 3

##### Blade cut resistance:

Performance level 0

##### Tear resistance:

Performance level 1

##### Puncture resistance:

Performance level 0

### European conformity

Gloves conform to the requirements of the European Directive 89/686/EEC and to the European standards EN 420:2003 + A1:2009 and EN 388:2003, EN 374:2003

They are categorised in "Complex Design" (= Protection against mortal risks).

EC-Type Examination Certificate and EC-quality control for the final product by

Centexbel  
Technologiepark 7  
B-9052 Zwijnaarde

### Storage

Keep away from sources of ozone or ignition.  
Keep out of direct sunlight; store in a cool and dry place.

Coating material	Grip design	Cuff style	Colour	AQL (EN374)	EN Size	Length mm	Thickness mm	Packaging
Natural rubber latex	Smooth Finish	Rolled beaded	Natural	0.65	8, 9, 10	711 (Port size 150mm)	0.51	10 pairs in black vacuum-sealed bags per case

#### Ansell Healthcare Europe N.V. (European Head Office)

Riverside Business Park, Block J

Boulevard International 55, 1070 Brussels, Belgium

Tel. +32 (0) 2 528 74 00 • Fax +32 (0) 2 528 74 01 • Fax Customer Service +32 (0) 2 528 74 03

<http://www.ansell.eu> • E-mail [info@ansell.eu](mailto:info@ansell.eu)

## AlphaTec® 55-101

## TECHNICAL DATASHEET

### Special Purpose

Print date 09-06-2015

#### Glove material

- Natural rubber latex (Coating material)

#### Possible Harmful ingredients

##### Sensitizers

- Natural rubber proteins
- Parabens
- Zinc Diethyldithiocarbamate

Only a very small number of users may be sensitised to this ingredient in the glove and hence may develop irritant and/or allergic contact reactions.

#### Reach Regulation 1907/2006

For more information, please consult the REACH statement on the Ansell website

#### Properties

#### EN Test Data

##### Liquidproofness:

Acceptable Quality Level 0.65 or EN performance level 3

##### Chemical permeation:

For more information on chemical permeation, please consult Ansell website

##### Abrasion resistance:

Performance level 3

##### Blade cut resistance:

Performance level 1

##### Tear resistance:

Performance level 2

##### Puncture resistance:

Performance level 1

#### European conformity

Gloves conform to the requirements of the European Directive 89/686/EEC and to the European standards EN 420:2003 + A1:2009 and EN 388:2003, EN 374:2003

They are categorised in "Complex Design" (= Protection against mortal risks).

EC-Type Examination Certificate and EC-quality control for the final product by

Centexbel  
Technologiepark 7  
B-9052 Zwijnaarde

#### Storage

Keep away from sources of ozone or ignition.

Keep out of direct sunlight; store in a cool and dry place.

Coating material	Grip design	Cuff style	Colour	AQL (EN374)	EN Size	Length mm	Thickness mm	Packaging
Natural rubber latex	Smooth Finish	Rolled beaded	Natural	0.65	8, 9, 10	700 (Port size 150mm)	0.76	10 pairs in black vacuum-sealed bags per case

#### Ansell Healthcare Europe N.V. (European Head Office)

Riverside Business Park, Block J

Boulevard International 55, 1070 Brussels, Belgium

Tel. +32 (0) 2 528 74 00 • Fax +32 (0) 2 528 74 01 • Fax Customer Service +32 (0) 2 528 74 03

<http://www.ansell.eu> • E-mail [info@ansell.eu](mailto:info@ansell.eu)

## AlphaTec® 55-102

## TECHNICAL DATASHEET

### Special Purpose

Print date 09-06-2015

#### Glove material

- Natural rubber latex (Coating material)

#### Possible Harmful ingredients

##### Sensitizers

- Natural rubber proteins
- Parabens
- Zinc Diethyldithiocarbamate

Only a very small number of users may be sensitised to this ingredient in the glove and hence may develop irritant and/or allergic contact reactions.

#### Reach Regulation 1907/2006

For more information, please consult the REACH statement on the Ansell website

#### Properties

#### EN Test Data

##### Liquidproofness:

Acceptable Quality Level 0.65 or EN performance level 3

##### Chemical permeation:

For more information on chemical permeation, please consult Ansell website

##### Abrasion resistance:

Performance level 3

##### Blade cut resistance:

Performance level 0

##### Tear resistance:

Performance level 1

##### Puncture resistance:

Performance level 0

#### European conformity

Gloves conform to the requirements of the European Directive 89/686/EEC and to the European standards EN 420:2003 + A1:2009 and EN 388:2003, EN 374:2003

They are categorised in "Complex Design" (= Protection against mortal risks).

EC-Type Examination Certificate and EC-quality control for the final product by

Centexbel  
Technologiepark 7  
B-9052 Zwijnaarde

#### Storage

Keep away from sources of ozone or ignition.

Keep out of direct sunlight; store in a cool and dry place.

Coating material	Grip design	Cuff style	Colour	AQL (EN374)	EN Size	Length mm	Thickness mm	Packaging
Natural rubber latex	Smooth Finish	Rolled beaded	Natural	0.65	9, 10	711 (Port size 180mm)	0.51	10 pairs in black vacuum-sealed bags per case

#### Ansell Healthcare Europe N.V. (European Head Office)

Riverside Business Park, Block J

Boulevard International 55, 1070 Brussels, Belgium

Tel. +32 (0) 2 528 74 00 • Fax +32 (0) 2 528 74 01 • Fax Customer Service +32 (0) 2 528 74 03

<http://www.ansell.eu> • E-mail [info@ansell.eu](mailto:info@ansell.eu)

## AlphaTec® 55-103

## TECHNICAL DATASHEET

### Special Purpose

Print date 09-06-2015

#### Glove material

- Natural rubber latex (Coating material)

#### Possible Harmful ingredients

##### Sensitizers

- Natural rubber proteins
- Parabens
- Zinc Diethyldithiocarbamate

Only a very small number of users may be sensitised to this ingredient in the glove and hence may develop irritant and/or allergic contact reactions.

#### Reach Regulation 1907/2006

For more information, please consult the REACH statement on the Ansell website

#### Properties

#### EN Test Data

##### Liquidproofness:

Acceptable Quality Level 0.65 or EN performance level 3

##### Chemical permeation:

For more information on chemical permeation, please consult Ansell website

##### Abrasion resistance:

Performance level 3

##### Blade cut resistance:

Performance level 1

##### Tear resistance:

Performance level 2

##### Puncture resistance:

Performance level 1

#### European conformity

Gloves conform to the requirements of the European Directive 89/686/EEC and to the European standards EN 420:2003 + A1:2009 and EN 388:2003, EN 374:2003

They are categorised in "Complex Design" (= Protection against mortal risks).

EC-Type Examination Certificate and EC-quality control for the final product by

Centexbel  
Technologiepark 7  
B-9052 Zwijnaarde

#### Storage

Keep away from sources of ozone or ignition.  
Keep out of direct sunlight; store in a cool and dry place.

Coating material	Grip design	Cuff style	Colour	AQL (EN374)	EN Size	Length mm	Thickness mm	Packaging
Natural rubber latex	Smooth Finish	Rolled beaded	Natural	0.65	9, 10	711 (Port size 180mm)	0.76	10 pairs in black vacuum-sealed bags per case

#### Ansell Healthcare Europe N.V. (European Head Office)

Riverside Business Park, Block J

Boulevard International 55, 1070 Brussels, Belgium

Tel. +32 (0) 2 528 74 00 • Fax +32 (0) 2 528 74 01 • Fax Customer Service +32 (0) 2 528 74 03

<http://www.ansell.eu> • E-mail [info@ansell.eu](mailto:info@ansell.eu)

## AlphaTec® 55-104

## TECHNICAL DATASHEET

### Special Purpose

Print date 09-06-2015

#### Glove material

- Natural rubber latex (Coating material)

#### Possible Harmful ingredients

##### Sensitizers

- Natural rubber proteins
- Parabens
- Zinc Diethyldithiocarbamate

Only a very small number of users may be sensitised to this ingredient in the glove and hence may develop irritant and/or allergic contact reactions.

#### Reach Regulation 1907/2006

For more information, please consult the REACH statement on the Ansell website

#### Properties

#### EN Test Data

##### Liquidproofness:

Acceptable Quality Level 0.65 or EN performance level 3

##### Chemical permeation:

For more information on chemical permeation, please consult Ansell website

##### Abrasion resistance:

Performance level 3

##### Blade cut resistance:

Performance level 0

##### Tear resistance:

Performance level 1

##### Puncture resistance:

Performance level 0

#### European conformity

Gloves conform to the requirements of the European Directive 89/686/EEC and to the European standards EN 420:2003 + A1:2009 and EN 388:2003, EN 374:2003

They are categorised in "Complex Design" (= Protection against mortal risks).

EC-Type Examination Certificate and EC-quality control for the final product by

Centexbel  
Technologiepark 7  
B-9052 Zwijnaarde

#### Storage

Keep away from sources of ozone or ignition.  
Keep out of direct sunlight; store in a cool and dry place.

Coating material	Grip design	Cuff style	Colour	AQL (EN374)	EN Size	Length mm	Thickness mm	Packaging
Natural rubber latex	Smooth Finish	Rolled beaded	Natural	0.65	9, 10	813 (Port Size 200mm)	0.51	10 pairs in black vacuum-sealed bags per case

#### Ansell Healthcare Europe N.V. (European Head Office)

Riverside Business Park, Block J

Boulevard International 55, 1070 Brussels, Belgium

Tel. +32 (0) 2 528 74 00 • Fax +32 (0) 2 528 74 01 • Fax Customer Service +32 (0) 2 528 74 03

<http://www.ansell.eu> • E-mail [info@ansell.eu](mailto:info@ansell.eu)

## AlphaTec® 55-105

## TECHNICAL DATASHEET

### Special Purpose

Print date 09-06-2015

#### Glove material

- Natural rubber latex (Coating material)

#### Possible Harmful ingredients

##### Sensitizers

- Natural rubber proteins
- Parabens
- Zinc Diethyldithiocarbamate

Only a very small number of users may be sensitised to this ingredient in the glove and hence may develop irritant and/or allergic contact reactions.

#### Reach Regulation 1907/2006

For more information, please consult the REACH statement on the Ansell website

#### Properties

#### EN Test Data

##### Liquidproofness:

Acceptable Quality Level 0.65 or EN performance level 3

##### Chemical permeation:

For more information on chemical permeation, please consult Ansell website

##### Abrasion resistance:

Performance level 3

##### Blade cut resistance:

Performance level 1

##### Tear resistance:

Performance level 2

##### Puncture resistance:

Performance level 1

#### European conformity

Gloves conform to the requirements of the European Directive 89/686/EEC and to the European standards EN 420:2003 + A1:2009 and EN 388:2003, EN 374:2003

They are categorised in "Complex Design" (= Protection against mortal risks).

EC-Type Examination Certificate and EC-quality control for the final product by

Centexbel  
Technologiepark 7  
B-9052 Zwijnaarde

#### Storage

Keep away from sources of ozone or ignition.  
Keep out of direct sunlight; store in a cool and dry place.

Coating material	Grip design	Cuff style	Colour	AQL (EN374)	EN Size	Length mm	Thickness mm	Packaging
Natural rubber latex	Smooth Finish	Rolled beaded	Natural	0.65	9, 10	813 (Port Size 200mm)	0.76	10 pairs in black vacuum-sealed bags per case

#### Ansell Healthcare Europe N.V. (European Head Office)

Riverside Business Park, Block J  
Boulevard International 55, 1070 Brussels, Belgium  
Tel. +32 (0) 2 528 74 00 • Fax +32 (0) 2 528 74 01 • Fax Customer Service +32 (0) 2 528 74 03  
<http://www.ansell.eu> • E-mail [info@ansell.eu](mailto:info@ansell.eu)

## AlphaTec® 55-106

## TECHNICAL DATASHEET

### Special Purpose

Print date 09-06-2015

#### Glove material

- Natural rubber latex (Coating material)

#### Possible Harmful ingredients

##### Sensitizers

- Natural rubber proteins
- Parabens
- Zinc Diethyldithiocarbamate

Only a very small number of users may be sensitised to this ingredient in the glove and hence may develop irritant and/or allergic contact reactions.

#### Reach Regulation 1907/2006

For more information, please consult the REACH statement on the Ansell website

#### Properties

#### EN Test Data

##### Liquidproofness:

Acceptable Quality Level 0.65 or EN performance level 3

##### Chemical permeation:

For more information on chemical permeation, please consult Ansell website

##### Abrasion resistance:

Performance level 3

##### Blade cut resistance:

Performance level 0

##### Tear resistance:

Performance level 1

##### Puncture resistance:

Performance level 0

#### European conformity

Gloves conform to the requirements of the European Directive 89/686/EEC and to the European standards EN 420:2003 + A1:2009 and EN 388:2003, EN 374:2003

They are categorised in "Complex Design" (= Protection against mortal risks).

EC-Type Examination Certificate and EC-quality control for the final product by

Centexbel  
Technologiepark 7  
B-9052 Zwijnaarde

#### Storage

Keep away from sources of ozone or ignition.  
Keep out of direct sunlight; store in a cool and dry place.

Coating material	Grip design	Cuff style	Colour	AQL (EN374)	EN Size	Length mm	Thickness mm	Packaging
Natural rubber latex	Smooth Finish	Rolled beaded	Natural	0.65	9, 10	787 (Port size 230mm)	0.51	10 pairs in black vacuum-sealed bags per case

#### Ansell Healthcare Europe N.V. (European Head Office)

Riverside Business Park, Block J

Boulevard International 55, 1070 Brussels, Belgium

Tel. +32 (0) 2 528 74 00 • Fax +32 (0) 2 528 74 01 • Fax Customer Service +32 (0) 2 528 74 03

<http://www.ansell.eu> • E-mail [info@ansell.eu](mailto:info@ansell.eu)

## AlphaTec® 55-107

## TECHNICAL DATASHEET

### Special Purpose

Print date 09-06-2015

#### Glove material

- Natural rubber latex (Coating material)

#### Possible Harmful ingredients

##### Sensitizers

- Natural rubber proteins
- Parabens
- Zinc Diethyldithiocarbamate

Only a very small number of users may be sensitised to this ingredient in the glove and hence may develop irritant and/or allergic contact reactions.

#### Reach Regulation 1907/2006

For more information, please consult the REACH statement on the Ansell website

#### Properties

#### EN Test Data

##### Liquidproofness:

Acceptable Quality Level 0.65 or EN performance level 3

##### Chemical permeation:

For more information on chemical permeation, please consult Ansell website

##### Abrasion resistance:

Performance level 3

##### Blade cut resistance:

Performance level 1

##### Tear resistance:

Performance level 2

##### Puncture resistance:

Performance level 1

#### European conformity

Gloves conform to the requirements of the European Directive 89/686/EEC and to the European standards EN 420:2003 + A1:2009 and EN 388:2003, EN 374:2003

They are categorised in "Complex Design" (= Protection against mortal risks).

EC-Type Examination Certificate and EC-quality control for the final product by

Centexbel  
Technologiepark 7  
B-9052 Zwijnaarde

#### Storage

Keep away from sources of ozone or ignition.  
Keep out of direct sunlight; store in a cool and dry place.

Coating material	Grip design	Cuff style	Colour	AQL (EN374)	EN Size	Length mm	Thickness mm	Packaging
Natural rubber latex	Smooth Finish	Rolled beaded	Natural	0.65	9, 10	787 (Port size 230mm)	0.76	10 pairs in black vacuum-sealed bags per case

#### Ansell Healthcare Europe N.V. (European Head Office)

Riverside Business Park, Block J  
Boulevard International 55, 1070 Brussels, Belgium  
Tel. +32 (0) 2 528 74 00 • Fax +32 (0) 2 528 74 01 • Fax Customer Service +32 (0) 2 528 74 03  
<http://www.ansell.eu> • E-mail [info@ansell.eu](mailto:info@ansell.eu)



## AlphaTec® 55-108

## TECHNICAL DATASHEET

### Special Purpose

Print date 09-06-2015

#### Glove material

- Natural rubber latex (Coating material)

#### Possible Harmful ingredients

##### Sensitizers

- Natural rubber proteins
- Parabens
- Zinc Diethyldithiocarbamate

Only a very small number of users may be sensitised to this ingredient in the glove and hence may develop irritant and/or allergic contact reactions.

#### Reach Regulation 1907/2006

For more information, please consult the REACH statement on the Ansell website

#### Properties

#### EN Test Data

##### Liquidproofness:

Acceptable Quality Level 0.65 or EN performance level 3

##### Chemical permeation:

For more information on chemical permeation, please consult Ansell website

##### Abrasion resistance:

Performance level 3

##### Blade cut resistance:

Performance level 0

##### Tear resistance:

Performance level 1

##### Puncture resistance:

Performance level 0

#### European conformity

Gloves conform to the requirements of the European Directive 89/686/EEC and to the European standards EN 420:2003 + A1:2009 and EN 388:2003, EN 374:2003

They are categorised in "Complex Design" (= Protection against mortal risks).

EC-Type Examination Certificate and EC-quality control for the final product by

Centexbel  
Technologiepark 7  
B-9052 Zwijnaarde

#### Storage

Keep away from sources of ozone or ignition.  
Keep out of direct sunlight; store in a cool and dry place.

Coating material	Grip design	Cuff style	Colour	AQL (EN374)	EN Size	Length mm	Thickness mm	Packaging
Natural rubber latex	Smooth Finish	Rolled beaded	Natural	0.65	9, 10	813 (Port size 250mm)	0.51	10 pairs in black vacuum-sealed bags per case

#### Ansell Healthcare Europe N.V. (European Head Office)

Riverside Business Park, Block J  
Boulevard International 55, 1070 Brussels, Belgium  
Tel. +32 (0) 2 528 74 00 • Fax +32 (0) 2 528 74 01 • Fax Customer Service +32 (0) 2 528 74 03  
<http://www.ansell.eu> • E-mail [info@ansell.eu](mailto:info@ansell.eu)

## AlphaTec® 55-109

## TECHNICAL DATASHEET

### Special Purpose

Print date 09-06-2015

#### Glove material

- Natural rubber latex (Coating material)

#### Possible Harmful ingredients

##### Sensitizers

- Natural rubber proteins
- Parabens
- Zinc Diethyldithiocarbamate

Only a very small number of users may be sensitised to this ingredient in the glove and hence may develop irritant and/or allergic contact reactions.

#### Reach Regulation 1907/2006

For more information, please consult the REACH statement on the Ansell website

#### Properties

#### EN Test Data

##### Liquidproofness:

Acceptable Quality Level 0.65 or EN performance level 3

##### Chemical permeation:

For more information on chemical permeation, please consult Ansell website

##### Abrasion resistance:

Performance level 3

##### Blade cut resistance:

Performance level 1

##### Tear resistance:

Performance level 2

##### Puncture resistance:

Performance level 1

#### European conformity

Gloves conform to the requirements of the European Directive 89/686/EEC and to the European standards EN 420:2003 + A1:2009 and EN 388:2003, EN 374:2003

They are categorised in "Complex Design" (= Protection against mortal risks).

EC-Type Examination Certificate and EC-quality control for the final product by

Centexbel  
Technologiepark 7  
B-9052 Zwijnaarde

#### Storage

Keep away from sources of ozone or ignition.  
Keep out of direct sunlight; store in a cool and dry place.

Coating material	Grip design	Cuff style	Colour	AQL (EN374)	EN Size	Length mm	Thickness mm	Packaging
Natural rubber latex	Smooth Finish	Rolled beaded	Natural	0.65	10	813 (Port size 250mm)	0.76	10 pairs in black vacuum-sealed bags per case

#### Ansell Healthcare Europe N.V. (European Head Office)

Riverside Business Park, Block J  
Boulevard International 55, 1070 Brussels, Belgium  
Tel. +32 (0) 2 528 74 00 • Fax +32 (0) 2 528 74 01 • Fax Customer Service +32 (0) 2 528 74 03  
<http://www.ansell.eu> • E-mail [info@ansell.eu](mailto:info@ansell.eu)

## AlphaTec® 55-110

## TECHNICAL DATASHEET

### Special Purpose

Print date 09-06-2015

#### Glove material

- Natural rubber latex (Coating material)

#### Possible Harmful ingredients

##### Sensitizers

- Natural rubber proteins
- Parabens
- Zinc Diethyldithiocarbamate

Only a very small number of users may be sensitised to this ingredient in the glove and hence may develop irritant and/or allergic contact reactions.

#### Reach Regulation 1907/2006

For more information, please consult the REACH statement on the Ansell website

#### Properties

#### EN Test Data

##### Liquidproofness:

Acceptable Quality Level 0.65 or EN performance level 3

##### Chemical permeation:

For more information on chemical permeation, please consult Ansell website

##### Abrasion resistance:

Performance level 3

##### Blade cut resistance:

Performance level 0

##### Tear resistance:

Performance level 1

##### Puncture resistance:

Performance level 0

#### European conformity

Gloves conform to the requirements of the European Directive 89/686/EEC and to the European standards EN 420:2003 + A1:2009 and EN 388:2003, EN 374:2003

They are categorised in "Complex Design" (= Protection against mortal risks).

EC-Type Examination Certificate and EC-quality control for the final product by

Centexbel  
Technologiepark 7  
B-9052 Zwijnaarde

#### Storage

Keep away from sources of ozone or ignition.  
Keep out of direct sunlight; store in a cool and dry place.

Coating material	Grip design	Cuff style	Colour	AQL (EN374)	EN Size	Length mm	Thickness mm	Packaging
Natural rubber latex	Smooth Finish	Rolled beaded	Natural	0.65	9, 10	813 (Port size 300mm)	0.51	10 pairs in black vacuum-sealed bags per case

#### Ansell Healthcare Europe N.V. (European Head Office)

Riverside Business Park, Block J  
Boulevard International 55, 1070 Brussels, Belgium  
Tel. +32 (0) 2 528 74 00 • Fax +32 (0) 2 528 74 01 • Fax Customer Service +32 (0) 2 528 74 03  
<http://www.ansell.eu> • E-mail [info@ansell.eu](mailto:info@ansell.eu)

## AlphaTec® 55-111

## TECHNICAL DATASHEET

### Special Purpose

Print date 09-06-2015

#### Glove material

- Natural rubber latex (Coating material)

#### Possible Harmful ingredients

##### Sensitizers

- Natural rubber proteins
- Parabens
- Zinc Diethyldithiocarbamate

Only a very small number of users may be sensitised to this ingredient in the glove and hence may develop irritant and/or allergic contact reactions.

#### Reach Regulation 1907/2006

For more information, please consult the REACH statement on the Ansell website

#### Properties

#### EN Test Data

##### Liquidproofness:

Acceptable Quality Level 0.65 or EN performance level 3

##### Chemical permeation:

For more information on chemical permeation, please consult Ansell website

##### Abrasion resistance:

Performance level 3

##### Blade cut resistance:

Performance level 1

##### Tear resistance:

Performance level 2

##### Puncture resistance:

Performance level 1

#### European conformity

Gloves conform to the requirements of the European Directive 89/686/EEC and to the European standards EN 420:2003 + A1:2009 and EN 388:2003, EN 374:2003

They are categorised in "Complex Design" (= Protection against mortal risks).

EC-Type Examination Certificate and EC-quality control for the final product by

Centexbel  
Technologiepark 7  
B-9052 Zwijnaarde

#### Storage

Keep away from sources of ozone or ignition.

Keep out of direct sunlight; store in a cool and dry place.

Coating material	Grip design	Cuff style	Colour	AQL (EN374)	EN Size	Length mm	Thickness mm	Packaging
Natural rubber latex	Smooth Finish	Rolled beaded	Natural	0.65	9, 10	813 (Port size 300mm)	0.76	10 pairs in black vacuum-sealed bags per case

#### Ansell Healthcare Europe N.V. (European Head Office)

Riverside Business Park, Block J

Boulevard International 55, 1070 Brussels, Belgium

Tel. +32 (0) 2 528 74 00 • Fax +32 (0) 2 528 74 01 • Fax Customer Service +32 (0) 2 528 74 03

<http://www.ansell.eu> • E-mail [info@ansell.eu](mailto:info@ansell.eu)

## AlphaTec® 55-113

## TECHNICAL DATASHEET

### Special Purpose

Print date 09-06-2015

#### Glove material

- Natural rubber latex (Coating material)

#### Possible Harmful ingredients

##### Sensitizers

- Natural rubber proteins
- Parabens
- Zinc Diethyldithiocarbamate

Only a very small number of users may be sensitised to this ingredient in the glove and hence may develop irritant and/or allergic contact reactions.

#### Reach Regulation 1907/2006

For more information, please consult the REACH statement on the Ansell website

#### Properties

#### EN Test Data

##### Liquidproofness:

Acceptable Quality Level 0.65 or EN performance level 3

##### Chemical permeation:

For more information on chemical permeation, please consult Ansell website

##### Abrasion resistance:

Performance level 3

##### Blade cut resistance:

Performance level 0

##### Tear resistance:

Performance level 1

##### Puncture resistance:

Performance level 0

#### European conformity

Gloves conform to the requirements of the European Directive 89/686/EEC and to the European standards EN 420:2003 + A1:2009 and EN 388:2003, EN 374:2003

They are categorised in "Complex Design" (= Protection against mortal risks).

EC-Type Examination Certificate and EC-quality control for the final product by

Centexbel  
Technologiepark 7  
B-9052 Zwijnaarde

#### Storage

Keep away from sources of ozone or ignition.  
Keep out of direct sunlight; store in a cool and dry place.

Coating material	Grip design	Cuff style	Colour	AQL (EN374)	EN Size	Length mm	Thickness mm	Packaging
Natural rubber latex	Smooth Finish	Rolled beaded	Natural	0.65	10	813 (Port Size 200mm)	0.75	10 pairs in black vacuum-sealed bags per case

#### Ansell Healthcare Europe N.V. (European Head Office)

Riverside Business Park, Block J  
Boulevard International 55, 1070 Brussels, Belgium  
Tel. +32 (0) 2 528 74 00 • Fax +32 (0) 2 528 74 01 • Fax Customer Service +32 (0) 2 528 74 03  
<http://www.ansell.eu> • E-mail [info@ansell.eu](mailto:info@ansell.eu)

## CE Declaration of Product Conformity

# Ansell

**Ansell Healthcare Europe N.V.**

Riverside Business Park  
Boulevard International 55

Block J  
B-1070 Brussels

Tel. 32 (0)2-528 74 00  
Fax 32 (0)2-528 74 01

## EC DECLARATION OF PRODUCT CONFORMITY

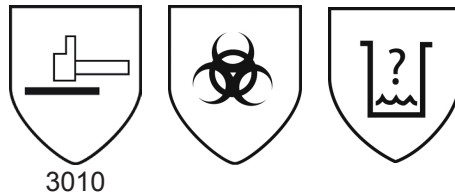
### Category III

The manufacturer, established in the European Economic Community:

**ANSELL HEALTHCARE EUROPE N.V.  
RIVERSIDE BUSINESS PARK, BLOCK J  
BOULEVARD INTERNATIONAL 55  
B-1070 BRUSSELS**

declares that the PPE described hereafter:

### AlphaTec® 55-100



is in conformity with the provisions of the Council Directive 89/686/EEC and with the European harmonised standards EN420:2003+A1:2009, EN388: 2003, EN374: 2003, and is identical to the PPE which is subject to the EC Type Examination certificate number 03213889 issued by the Notified Body:

**CENTEXBEL (0493)  
Technologiepark 7  
B-9052 Zwijnaarde**

is subject to the procedure set out in Article 11 point B of Directive 89/686/EEC under the supervision of the Notified Body

**BSI (0086)  
Kitemark Court Davy Avenue Knowlhill  
Milton Keynes MK5 8PP United Kingdom**

Thursday, June 11, 2015  
Alison Arnot-Bradshaw  
Senior Director – EMEA/APAC Regulatory Affairs  
Ansell

## Ansell

**Ansell Healthcare Europe N.V.**

Riverside Business Park  
Boulevard International 55

Block J  
B-1070 Brussels

Tel. 32 (0)2-528 74 00  
Fax 32 (0)2-528 74 01

### EC DECLARATION OF PRODUCT CONFORMITY

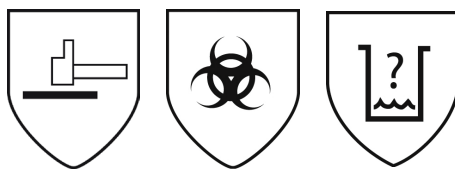
#### Category III

The manufacturer, established in the European Economic Community:

**ANSELL HEALTHCARE EUROPE N.V.  
RIVERSIDE BUSINESS PARK, BLOCK J  
BOULEVARD INTERNATIONAL 55  
B-1070 BRUSSELS**

declares that the PPE described hereafter:

#### AlphaTec® 55-101



3121

is in conformity with the provisions of the Council Directive 89/686/EEC and with the European harmonised standards EN420:2003+A1:2009, EN388: 2003, EN374: 2003, and is identical to the PPE which is subject to the EC Type Examination certificate number 03213890 issued by the Notified Body:

**CENTEXBEL (0493)  
Technologiepark 7  
B-9052 Zwijnaarde**

is subject to the procedure set out in Article 11 point B of Directive 89/686/EEC under the supervision of the Notified Body

**BSI (0086)  
Kitemark Court Davy Avenue Knowlhill  
Milton Keynes MK5 8PP United Kingdom**



**Thursday, June 11, 2015  
Alison Arnot-Bradshaw  
Senior Director – EMEA/APAC Regulatory Affairs  
Ansell**

## Ansell

**Ansell Healthcare Europe N.V.**

Riverside Business Park

Block J

Tel. 32 (0)2-528 74 00

Boulevard International 55

B-1070 Brussels

Fax 32 (0)2-528 74 01

### EC DECLARATION OF PRODUCT CONFORMITY

#### Category III

The manufacturer, established in the European Economic Community:

**ANSELL HEALTHCARE EUROPE N.V.  
RIVERSIDE BUSINESS PARK, BLOCK J  
BOULEVARD INTERNATIONAL 55  
B-1070 BRUSSELS**

declares that the PPE described hereafter:

#### AlphaTec® 55-102



3010

is in conformity with the provisions of the Council Directive 89/686/EEC and with the European harmonised standards EN420:2003+A1:2009, EN388: 2003, EN374: 2003, and is identical to the PPE which is subject to the EC Type Examination certificate number 03213889 issued by the Notified Body:

**CENTEXBEL (0493)  
Technologiepark 7  
B-9052 Zwijnaarde**

is subject to the procedure set out in Article 11 point B of Directive 89/686/EEC under the supervision of the Notified Body

**BSI (0086)  
Kitemark Court Davy Avenue Knowlhill  
Milton Keynes MK5 8PP United Kingdom**

**Thursday, June 11, 2015  
Alison Arnot-Bradshaw  
Senior Director – EMEA/APAC Regulatory Affairs  
Ansell**



## Ansell

**Ansell Healthcare Europe N.V.**

Riverside Business Park  
Boulevard International 55

Block J  
B-1070 Brussels

Tel. 32 (0)2-528 74 00  
Fax 32 (0)2-528 74 01

### EC DECLARATION OF PRODUCT CONFORMITY

#### Category III

The manufacturer, established in the European Economic Community:

**ANSELL HEALTHCARE EUROPE N.V.  
RIVERSIDE BUSINESS PARK, BLOCK J  
BOULEVARD INTERNATIONAL 55  
B-1070 BRUSSELS**

declares that the PPE described hereafter:

#### AlphaTec® 55-103



3121

is in conformity with the provisions of the Council Directive 89/686/EEC and with the European harmonised standards EN420:2003+A1:2009, EN388: 2003, EN374: 2003, and is identical to the PPE which is subject to the EC Type Examination certificate number 03213890 issued by the Notified Body:

**CENTEXBEL (0493)  
Technologiepark 7  
B-9052 Zwijnaarde**

is subject to the procedure set out in Article 11 point B of Directive 89/686/EEC under the supervision of the Notified Body

**BSI (0086)  
Kitemark Court Davy Avenue Knowlhill  
Milton Keynes MK5 8PP United Kingdom**



**Thursday, June 11, 2015  
Alison Arnot-Bradshaw  
Senior Director – EMEA/APAC Regulatory Affairs  
Ansell**

## Ansell

**Ansell Healthcare Europe N.V.**

Riverside Business Park

Boulevard International 55

Block J

B-1070 Brussels

Tel. 32 (0)2-528 74 00

Fax 32 (0)2-528 74 01

### EC DECLARATION OF PRODUCT CONFORMITY

#### Category III

The manufacturer, established in the European Economic Community:

**ANSELL HEALTHCARE EUROPE N.V.  
RIVERSIDE BUSINESS PARK, BLOCK J  
BOULEVARD INTERNATIONAL 55  
B-1070 BRUSSELS**

declares that the PPE described hereafter:

#### AlphaTec® 55-104



3010

is in conformity with the provisions of the Council Directive 89/686/EEC and with the European harmonised standards EN420:2003+A1:2009, EN388: 2003, EN374: 2003, and is identical to the PPE which is subject to the EC Type Examination certificate number 03213889 issued by the Notified Body:

**CENTEXBEL (0493)  
Technologiepark 7  
B-9052 Zwijnaarde**

is subject to the procedure set out in Article 11 point B of Directive 89/686/EEC under the supervision of the Notified Body

**BSI (0086)  
Kitemark Court Davy Avenue Knowlhill  
Milton Keynes MK5 8PP United Kingdom**



**Thursday, June 11, 2015  
Alison Arnot-Bradshaw  
Senior Director – EMEA/APAC Regulatory Affairs  
Ansell**

## Ansell

**Ansell Healthcare Europe N.V.**

Riverside Business Park

Boulevard International 55

Block J

B-1070 Brussels

Tel. 32 (0)2-528 74 00

Fax 32 (0)2-528 74 01

### EC DECLARATION OF PRODUCT CONFORMITY

#### Category III

The manufacturer, established in the European Economic Community:

**ANSELL HEALTHCARE EUROPE N.V.  
RIVERSIDE BUSINESS PARK, BLOCK J  
BOULEVARD INTERNATIONAL 55  
B-1070 BRUSSELS**

declares that the PPE described hereafter:

#### AlphaTec® 55-105



3121

is in conformity with the provisions of the Council Directive 89/686/EEC and with the European harmonised standards EN420:2003+A1:2009, EN388: 2003, EN374: 2003, and is identical to the PPE which is subject to the EC Type Examination certificate number 03213890 issued by the Notified Body:

**CENTEXBEL (0493)  
Technologiepark 7  
B-9052 Zwijnaarde**

is subject to the procedure set out in Article 11 point B of Directive 89/686/EEC under the supervision of the Notified Body

**CENTEXBEL (0493)  
Technologiepark 7  
B-9052 Zwijnaarde**



Thursday, June 11, 2015  
Alison Arnot-Bradshaw  
Senior Director – EMEA/APAC Regulatory Affairs  
Ansell

## Ansell

**Ansell Healthcare Europe N.V.**

Riverside Business Park

Block J

Tel. 32 (0)2-528 74 00

Boulevard International 55

B-1070 Brussels

Fax 32 (0)2-528 74 01

### EC DECLARATION OF PRODUCT CONFORMITY

#### Category III

The manufacturer, established in the European Economic Community:

**ANSELL HEALTHCARE EUROPE N.V.  
RIVERSIDE BUSINESS PARK, BLOCK J  
BOULEVARD INTERNATIONAL 55  
B-1070 BRUSSELS**

declares that the PPE described hereafter:

#### AlphaTec® 55-106



3010

is in conformity with the provisions of the Council Directive 89/686/EEC and with the European harmonised standards EN420:2003+A1:2009, EN388: 2003, EN374: 2003, and is identical to the PPE which is subject to the EC Type Examination certificate number 03213889 issued by the Notified Body:

**CENTEXBEL (0493)  
Technologiepark 7  
B-9052 Zwijnaarde**

is subject to the procedure set out in Article 11 point B of Directive 89/686/EEC under the supervision of the Notified Body

**BSI (0086)  
Kitemark Court Davy Avenue Knowlhill  
Milton Keynes MK5 8PP United Kingdom**



**Thursday, June 11, 2015  
Alison Arnot-Bradshaw  
Senior Director – EMEA/APAC Regulatory Affairs  
Ansell**

## Ansell

**Ansell Healthcare Europe N.V.**

Riverside Business Park  
Boulevard International 55

Block J  
B-1070 Brussels

Tel. 32 (0)2-528 74 00  
Fax 32 (0)2-528 74 01

### EC DECLARATION OF PRODUCT CONFORMITY

#### Category III

The manufacturer, established in the European Economic Community:

**ANSELL HEALTHCARE EUROPE N.V.  
RIVERSIDE BUSINESS PARK, BLOCK J  
BOULEVARD INTERNATIONAL 55  
B-1070 BRUSSELS**

declares that the PPE described hereafter:

#### AlphaTec® 55-107



3121

is in conformity with the provisions of the Council Directive 89/686/EEC and with the European harmonised standards EN420:2003+A1:2009, EN388: 2003, EN374: 2003, and is identical to the PPE which is subject to the EC Type Examination certificate number 03213890 issued by the Notified Body:

**CENTEXBEL (0493)  
Technologiepark 7  
B-9052 Zwijnaarde**

is subject to the procedure set out in Article 11 point B of Directive 89/686/EEC under the supervision of the Notified Body

**BSI (0086)  
Kitemark Court Davy Avenue Knowlhill  
Milton Keynes MK5 8PP United Kingdom**

**Thursday, June 11, 2015  
Alison Arnot-Bradshaw  
Senior Director – EMEA/APAC Regulatory Affairs  
Ansell**

## Ansell

**Ansell Healthcare Europe N.V.**

Riverside Business Park

Block J

Tel. 32 (0)2-528 74 00

Boulevard International 55

B-1070 Brussels

Fax 32 (0)2-528 74 01

### EC DECLARATION OF PRODUCT CONFORMITY

#### Category III

The manufacturer, established in the European Economic Community:

**ANSELL HEALTHCARE EUROPE N.V.  
RIVERSIDE BUSINESS PARK, BLOCK J  
BOULEVARD INTERNATIONAL 55  
B-1070 BRUSSELS**

declares that the PPE described hereafter:

#### AlphaTec® 55-108



3010

is in conformity with the provisions of the Council Directive 89/686/EEC and with the European harmonised standards EN420:2003+A1:2009, EN388: 2003, EN374: 2003, and is identical to the PPE which is subject to the EC Type Examination certificate number 03213889 issued by the Notified Body:

**CENTEXBEL (0493)  
Technologiepark 7  
B-9052 Zwijnaarde**

is subject to the procedure set out in Article 11 point B of Directive 89/686/EEC under the supervision of the Notified Body

**BSI (0086)  
Kitemark Court Davy Avenue Knowlhill  
Milton Keynes MK5 8PP United Kingdom**



**Thursday, June 11, 2015  
Alison Arnot-Bradshaw  
Senior Director – EMEA/APAC Regulatory Affairs  
Ansell**

## Ansell

**Ansell Healthcare Europe N.V.**

Riverside Business Park  
Boulevard International 55

Block J  
B-1070 Brussels

Tel. 32 (0)2-528 74 00  
Fax 32 (0)2-528 74 01

### EC DECLARATION OF PRODUCT CONFORMITY

#### Category III

The manufacturer, established in the European Economic Community:

**ANSELL HEALTHCARE EUROPE N.V.  
RIVERSIDE BUSINESS PARK, BLOCK J  
BOULEVARD INTERNATIONAL 55  
B-1070 BRUSSELS**

declares that the PPE described hereafter:

#### AlphaTec® 55-109



3121

is in conformity with the provisions of the Council Directive 89/686/EEC and with the European harmonised standards EN420:2003+A1:2009, EN388: 2003, EN374: 2003, and is identical to the PPE which is subject to the EC Type Examination certificate number 03213890 issued by the Notified Body:

**CENTEXBEL (0493)  
Technologiepark 7  
B-9052 Zwijnaarde**

is subject to the procedure set out in Article 11 point B of Directive 89/686/EEC under the supervision of the Notified Body

**BSI (0086)  
Kitemark Court Davy Avenue Knowlhill  
Milton Keynes MK5 8PP United Kingdom**



**Thursday, June 11, 2015  
Alison Arnot-Bradshaw  
Senior Director – EMEA/APAC Regulatory Affairs  
Ansell**

## Ansell

**Ansell Healthcare Europe N.V.**

Riverside Business Park

Block J

Tel. 32 (0)2-528 74 00

Boulevard International 55

B-1070 Brussels

Fax 32 (0)2-528 74 01

### EC DECLARATION OF PRODUCT CONFORMITY

#### Category III

The manufacturer, established in the European Economic Community:

**ANSELL HEALTHCARE EUROPE N.V.  
RIVERSIDE BUSINESS PARK, BLOCK J  
BOULEVARD INTERNATIONAL 55  
B-1070 BRUSSELS**

declares that the PPE described hereafter:

#### AlphaTec® 55-110



3010

is in conformity with the provisions of the Council Directive 89/686/EEC and with the European harmonised standards EN420:2003+A1:2009, EN388: 2003, EN374: 2003, and is identical to the PPE which is subject to the EC Type Examination certificate number 03213889 issued by the Notified Body:

**CENTEXBEL (0493)  
Technologiepark 7  
B-9052 Zwijnaarde**

is subject to the procedure set out in Article 11 point B of Directive 89/686/EEC under the supervision of the Notified Body

**BSI (0086)  
Kitemark Court Davy Avenue Knowlhill  
Milton Keynes MK5 8PP United Kingdom**



**Thursday, June 11, 2015  
Alison Arnot-Bradshaw  
Senior Director – EMEA/APAC Regulatory Affairs  
Ansell**



## Ansell

**Ansell Healthcare Europe N.V.**

Riverside Business Park

Block J

Tel. 32 (0)2-528 74 00

Boulevard International 55

B-1070 Brussels

Fax 32 (0)2-528 74 01

### EC DECLARATION OF PRODUCT CONFORMITY

#### Category III

The manufacturer, established in the European Economic Community:

**ANSELL HEALTHCARE EUROPE N.V.  
RIVERSIDE BUSINESS PARK, BLOCK J  
BOULEVARD INTERNATIONAL 55  
B-1070 BRUSSELS**

declares that the PPE described hereafter:

#### AlphaTec® 55-111



3121

is in conformity with the provisions of the Council Directive 89/686/EEC and with the European harmonised standards EN420:2003+A1:2009, EN388: 2003, EN374: 2003, and is identical to the PPE which is subject to the EC Type Examination certificate number 03213890 issued by the Notified Body:

**CENTEXBEL (0493)  
Technologiepark 7  
B-9052 Zwijnaarde**

is subject to the procedure set out in Article 11 point B of Directive 89/686/EEC under the supervision of the Notified Body

**BSI (0086)  
Kitemark Court Davy Avenue Knowlhill  
Milton Keynes MK5 8PP United Kingdom**



**Thursday, June 11, 2015  
Alison Arnot-Bradshaw  
Senior Director – EMEA/APAC Regulatory Affairs  
Ansell**

## Ansell

**Ansell Healthcare Europe N.V.**

Riverside Business Park

Block J

Tel. 32 (0)2-528 74 00

Boulevard International 55

B-1070 Brussels

Fax 32 (0)2-528 74 01

### EC DECLARATION OF PRODUCT CONFORMITY

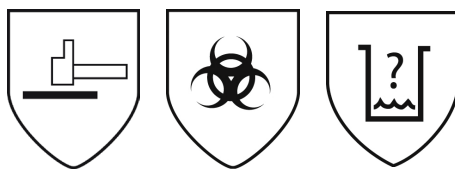
#### Category III

The manufacturer, established in the European Economic Community:

**ANSELL HEALTHCARE EUROPE N.V.  
RIVERSIDE BUSINESS PARK, BLOCK J  
BOULEVARD INTERNATIONAL 55  
B-1070 BRUSSELS**

declares that the PPE described hereafter:

#### AlphaTec® 55-113



3010

is in conformity with the provisions of the Council Directive 89/686/EEC and with the European harmonised standards EN420:2003+A1:2009, EN388: 2003, EN374: 2003, and is identical to the PPE which is subject to the EC Type Examination certificate number 03213889 issued by the Notified Body:

**CENTEXBEL (0493)  
Technologiepark 7  
B-9052 Zwijnaarde**

is subject to the procedure set out in Article 11 point B of Directive 89/686/EEC under the supervision of the Notified Body

**BSI (0086)  
Kitemark Court Davy Avenue Knowlhill  
Milton Keynes MK5 8PP United Kingdom**



Thursday, June 11, 2015

**Alison Arnot-Bradshaw  
Senior Director – EMEA/APAC Regulatory Affairs  
Ansell**

## CE Certificate



In application of the directive 89/686/EEG of 21 December 1989 concerning the harmonisation of the Member States legislation relative to personal protective equipment, Centexbel Notified body 0493 authorised by decree AV/OA235/ST dated 94-05-25 of the Ministry of Employment and Labour has issued

to: **Ansell Healthcare Europe nv Riverside Business Park - Spey House**  
**Spey House Internationelelaan 55**  
**1070 Brussel**  
**Belgium**

### CE TYPE EXAMINATION CERTIFICATE

**Nr. 03213889**

This CE Type examination certificate is valid until 12/12/2018

for: The gloves AlphaTec 55-100, 55-102, 55-104, 55-106, 55-108, 55-110 and 55-113  
The personal protective equipment above mentioned satisfies the applicable essential safety requirements of the Directive 89/686/EEG.

For the argumentation, the following standards are used:

EN 420:2003+A1:2009: Protective gloves - general requirements

EN 388:2003: Gloves for protection against mechanical risks (see annex)

EN 374-1:2003 (low): Protective gloves against chemicals and micro-organisms

This is PPE of category III, subject to regular checks in accordance with article 11 of the European PPE directive. In agreement with the manufacturer's choice audits shall be carried out to assess the quality control system (art.11B). The manufacturer must be able, on request, to present the audit report. A first audit shall be performed at the latest on 31.12. 2015 and at least be repeated with intervals of one year.

This declaration applies to the equipment as submitted in the type testing and described in the manufacturer's technical file that is registered with number 6229

Issued by Centexbel, Notified Body 0493<sup>(1)</sup>, in Ghent, on

Inge De Witte  
Certification Manager

12 December 2013

Jan Laperre  
directeur-generaal



056-PROD

attached: Annex 2 pages



**CENTEXBEL, TEXTILE COMPETENCE CENTRE**

<sup>(1)</sup>Recognized by decree AV/OA235/ST of 94-05-25 of the Ministry of Labor and Employment

Technologiepark 7 • BE 9052 Gent • Belgium • phone +32 9 220 41 51 • fax +32 9 220 49 55 • gent@centexbel.be • www.centexbel.be

VAT • BE 0459.218.289 • IBAN • BE 44 2100 4729 6545 • BIC • GEBABEBB



### Annex to certificate 03213889

The gloves AlphaTec 55-100, 55-102, 55-104, 55-106, 55-108, 55-110 and 55-113 fulfil the requirements of EN 388:2003

to use the following pictogram:



3  
0  
1  
0



**CENTEXBEL, TEXTILE COMPETENCE CENTRE**

Technologiepark 7 • BE 9052 Gent • Belgium • phone +32 9 220 41 51 • fax +32 9 220 49 55 • gent@centexbel.be • www.centexbel.be

VAT • BE 0459.218.289 • IBAN • BE 44 2100 4729 6545 • BIC • GEBABEBB



## Annex to certificate 03213889

The gloves AlphaTec 55-100, 55-102, 55-104, 55-106, 55-108, 55-110 and 55-113 fulfils the requirements of EN 374-1:2003 (low):

to use the following pictogram



NaOH 40% - Level 6



**CENTEXBEL, TEXTILE COMPETENCE CENTRE**

Technologiepark 7 • BE 9052 Gent • Belgium • phone +32 9 220 41 51 • fax +32 9 220 49 55 • gent@centexbel.be • www.centexbel.be

VAT • BE 0459.218.289 • IBAN • BE 44 2100 4729 6545 • BIC • GEBABEBB



In application of the directive 89/686/EEG of 21 December 1989 concerning the harmonisation of the Member States legislation relative to personal protective equipment, Centexbel Notified body 0493 authorised by decree AV/OA235/ST dated 94-05-25 of the Ministry of Employment and Labour has issued

to: **Ansell Healthcare Europe nv Riverside Business Park - Spey House**

**Spey House Internationelelaan 55  
1070 Brussel  
Belgium**

## CE TYPE EXAMINATION CERTIFICATE

**Nr. 03213890**

This CE Type examination certificate is valid until 12/12/2018

for: The gloves AlphaTec 55-101, 55-103, 55-105, 55-107, 55-109 and 55-111

The personal protective equipment above mentioned satisfies the applicable essential safety requirements of the Directive 89/686/EEG.

For the argumentation, the following standards are used:

EN 420:2003+A1:2009: Protective gloves - general requirements

EN 388:2003: Gloves for protection against mechanical risks (see annex)

EN 374-1:2003 (low): Protective gloves against chemicals and micro-organisms

This is PPE of category III, subject to regular checks in accordance with article 11 of the European PPE directive. In agreement with the manufacturer's choice audits shall be carried out to assess the quality control system (art.11B). The manufacturer must be able, on request, to present the audit report. A first audit shall be performed at the latest on 31.12. 2015 and at least be repeated with intervals of one year.

This declaration applies to the equipment as submitted in the type testing and described in the manufacturer's technical file that is registered with number 6230

Issued by Centexbel, Notified Body 0493<sup>(\*)</sup>, in Ghent, on

  
Inge De Witte  
Certification Manager

12 December 2013

  
Jan Laparre  
directeur-generaal

attached: Annex 2 pages

<sup>(\*)</sup>Recognized by decree AV/OA235/ST of 94-05-25 of the Ministry of Labor and Employment



056-PROD

### CENTEXBEL GENT

Technologiepark 7, BE-9052 Zwijnaarde (Gent)

tel. + 32 9 220 41 51

fax + 32 9 220 49 55

e-mail [gent@centexbel.be](mailto:gent@centexbel.be)

BTW BE 0459 218 289 - fin.rek. 210-0472965-45 - IBAN BE 44 2100 4729 6545

[www.centexbel.be](http://www.centexbel.be)



## Annex to certificate 03213890

The gloves AlphaTec 55-101, 55-103, 55-105, 55-107, 55-109 and 55-111 fulfils the requirements of EN 374-1:2003 (low):

to use the following pictogram



NaOH 40% - Level 6

### CENTEXBEL GENT

Technologiepark 7, BE-9052 Zwijnaarde (Gent)

tel. + 32 9 220 41 51

fax + 32 9 220 49 55

e-mail [gent@centexbel.be](mailto:gent@centexbel.be)

BTW BE 0459 218 289 - fin.rek. 210-0472965-45 - IBAN BE 44 2100 4729 6545

[www.centexbel.be](http://www.centexbel.be)



## Annex to certificate 03213890

The gloves AlphaTec 55-101, 55-103, 55-105, 55-107, 55-109 and 55-111 fulfil the requirements of EN 388:2003

to use the following pictogram:



3

1

2

1

### CENTEXBEL GENT

Technologiepark 7, BE-9052 Zwijnaarde (Gent)

tel. + 32 9 220 41 51

fax + 32 9 220 49 55

e-mail [gent@centexbel.be](mailto:gent@centexbel.be)

BTW BE 0459 218 289 - fin.rek. 210-0472965-45 - IBAN BE 44 2100 4729 6545

[www.centexbel.be](http://www.centexbel.be)



## Certificate of Conformance

Ansell Industrial & Specialty Gloves Malaysia Sdn Bhd  
(Company No. 038030-K)  
(Formerly known as Marigold Industrial (Malaysia) Sdn. Bhd.)  
P.O. Box 7, 1A & 1B, Lorong Perusahaan 1  
Kulim Industrial Estate, 09000 Kulim  
Kedah Darul Aman, Malaysia.

T. +604-4945123  
F. +604-4891980



## Certificate Of Conformity

We declare that the following Product,

Style Number:	55 - 100
Description :	Isolator Gloves 6R2028A
Material Identification:	Natural Rubber Latex
Batch Number:	15041602C1
Shelf Life:	35 months

is in conformity with the following standards or other normative documents:

FDA positive list CFR Vol. 21.

Directive 89/686/EEC EC Type Test Certificate 03213889

EN420:2003+A1:2009: Protective Gloves –General Requirements

EN388:2003: Gloves for Protection against Mechanical Risk

EN374-1:2003 (low): Protective Glove against Chemicals and Micro-organism

LK Khoo  
Quality Assurance Manager  
Date : 16 July 2015

Ansell Industrial & Specialty Gloves Malaysia Sdn Bhd  
(Company No. 038030-K)  
(Formerly known as Marigold Industrial (Malaysia) Sdn. Bhd.)  
P.O. Box 7, 1A & 1B, Lorong Perusahaan 1  
Kulim Industrial Estate, 09000 Kulim  
Kedah Darul Aman, Malaysia.

T. +604-4945123  
F. +604-4891980



## Certificate Of Conformity

We declare that the following Product,

Style Number:	55 - 101
Description :	Isolator Gloves 6R3028A
Material Identification:	Natural Rubber Latex
Batch Number:	15040102C1
Shelf Life:	35 months

is in conformity with the following standards or other normative documents:

FDA positive list CFR Vol. 21.

Directive 89/686/EEC EC Type Test Certificate 03213890

EN420:2003+A1:2009: Protective Gloves –General Requirements

EN388:2003: Gloves for Protection against Mechanical Risk

EN374-1:2003 (low): Protective Glove against Chemicals and Micro-organism

LK Khoo  
Quality Assurance Manager  
Date: 16 July 2015

Ansell Industrial & Specialty Gloves Malaysia Sdn Bhd  
(Company No. 038030-K)  
(Formerly known as Marigold Industrial (Malaysia) Sdn. Bhd.)  
P.O. Box 7, 1A & 1B, Lorong Perusahaan 1  
Kulim Industrial Estate, 09000 Kulim  
Kedah Darul Aman, Malaysia.

T. +604-4945123  
F. +604-4891980



## Certificate Of Conformity

We declare that the following Product,

Style Number:	55 - 102
Description :	Isolator Gloves 7R2028A
Material Identification:	Natural Rubber Latex
Batch Number:	15031902C1
Shelf Life:	35 months

is in conformity with the following standards or other normative documents:

FDA positive list CFR Vol. 21.

Directive 89/686/EEC EC Type Test Certificate 03213889

EN420:2003+A1:2009: Protective Gloves –General Requirements

EN388:2003: Gloves for Protection against Mechanical Risk

EN374-1:2003 (low): Protective Glove against Chemicals and Micro-organism

LK Khoo  
Quality Assurance Manager  
Date : 16 July 2015

Ansell Industrial & Specialty Gloves Malaysia Sdn Bhd  
(Company No. 038030-K)  
(Formerly known as Marigold Industrial (Malaysia) Sdn. Bhd.)  
P.O. Box 7, 1A & 1B, Lorong Perusahaan 1  
Kulim Industrial Estate, 09000 Kulim  
Kedah Darul Aman, Malaysia.

T. +604-4945123  
F. +604-4891980



## Certificate Of Conformity

We declare that the following Product,

Style Number:	55 - 103
Description :	Isolator Gloves 7R3028A
Material Identification:	Natural Rubber Latex
Batch Number:	15040102C1
Shelf Life:	35 months

is in conformity with the following standards or other normative documents:

FDA positive list CFR Vol. 21.

Directive 89/686/EEC EC Type Test Certificate 03213890

EN420:2003+A1:2009: Protective Gloves –General Requirements

EN388:2003: Gloves for Protection against Mechanical Risk

EN374-1:2003 (low): Protective Glove against Chemicals and Micro-organism

LK Khoo  
Quality Assurance Manager  
Date: 16 July 2015

Ansell Industrial & Specialty Gloves Malaysia Sdn Bhd  
(Company No. 038030-K)  
(Formerly known as Marigold Industrial (Malaysia) Sdn. Bhd.)  
P.O. Box 7, 1A & 1B, Lorong Perusahaan 1  
Kulim Industrial Estate, 09000 Kulim  
Kedah Darul Aman, Malaysia.

T. +604-4945123  
F. +604-4891980



## Certificate Of Conformity

We declare that the following Product,

Style Number:	55 - 104
Description :	Isolator Gloves 8R2032A
Material Identification:	Natural Rubber Latex
Batch Number:	15040102C1
Shelf Life:	35 months

is in conformity with the following standards or other normative documents:

FDA positive list CFR Vol. 21.

Directive 89/686/EEC EC Type Test Certificate 03213889

EN420:2003+A1:2009: Protective Gloves –General Requirements

EN388:2003: Gloves for Protection against Mechanical Risk

EN374-1:2003 (low): Protective Glove against Chemicals and Micro-organism

LK Khoo  
Quality Assurance Manager  
Date : 16 July 2015

Ansell Industrial & Specialty Gloves Malaysia Sdn Bhd  
(Company No. 038030-K)  
(Formerly known as Marigold Industrial (Malaysia) Sdn. Bhd.)  
P.O. Box 7, 1A & 1B, Lorong Perusahaan 1  
Kulim Industrial Estate, 09000 Kulim  
Kedah Darul Aman, Malaysia.

T. +604-4945123  
F. +604-4891980



## Certificate Of Conformity

We declare that the following Product,

Style Number:	55 – 105
Description :	Isolator Gloves 8R3028A
Material Identification:	Natural Rubber Latex
Batch Number:	15030701C1
Shelf Life:	35 months

is in conformity with the following standards or other normative documents:

FDA positive list CFR Vol. 21.

Directive 89/686/EEC EC Type Test Certificate 03213890

EN420:2003+A1:2009: Protective Gloves –General Requirements

EN388:2003: Gloves for Protection against Mechanical Risk

EN374-1:2003 (low): Protective Glove against Chemicals and Micro-organism

LK Khoo  
Quality Assurance Manager  
Date: 16 July 2015

Ansell Industrial & Specialty Gloves Malaysia Sdn Bhd  
(Company No. 038030-K)  
(Formerly known as Marigold Industrial (Malaysia) Sdn. Bhd.)  
P.O. Box 7, 1A & 1B, Lorong Perusahaan 1  
Kulim Industrial Estate, 09000 Kulim  
Kedah Darul Aman, Malaysia.

T. +604-4945123  
F. +604-4891980



## Certificate Of Conformity

We declare that the following Product,

Style Number:	55 - 106
Description :	Isolator Gloves 9R2031A
Material Identification:	Natural Rubber Latex
Batch Number:	14101502C1
Shelf Life:	35 months

is in conformity with the following standards or other normative documents:

FDA positive list CFR Vol. 21.

Directive 89/686/EEC EC Type Test Certificate 03213889

EN420:2003+A1:2009: Protective Gloves –General Requirements

EN388:2003: Gloves for Protection against Mechanical Risk

EN374-1:2003 (low): Protective Glove against Chemicals and Micro-organism

LK Khoo  
Quality Assurance Manager  
Date : 16 July 2015

Ansell Industrial & Specialty Gloves Malaysia Sdn Bhd  
(Company No. 038030-K)  
(Formerly known as Marigold Industrial (Malaysia) Sdn. Bhd.)  
P.O. Box 7, 1A & 1B, Lorong Perusahaan 1  
Kulim Industrial Estate, 09000 Kulim  
Kedah Darul Aman, Malaysia.

T. +604-4945123  
F. +604-4891980



## Certificate Of Conformity

We declare that the following Product,

Style Number:	55 – 107
Description :	Isolator Gloves 9R3031A
Material Identification:	Natural Rubber Latex
Batch Number:	15040201C1
Shelf Life:	35 months

is in conformity with the following standards or other normative documents:

FDA positive list CFR Vol. 21.

Directive 89/686/EEC EC Type Test Certificate 03213890

EN420:2003+A1:2009: Protective Gloves –General Requirements

EN388:2003: Gloves for Protection against Mechanical Risk

EN374-1:2003 (low): Protective Glove against Chemicals and Micro-organism

LK Khoo  
Quality Assurance Manager  
Date: 16 July 2015



Ansell Industrial & Specialty Gloves Malaysia Sdn Bhd  
(Company No. 038030-K)  
(Formerly known as Marigold Industrial (Malaysia) Sdn. Bhd.)  
P.O. Box 7, 1A & 1B, Lorong Perusahaan 1  
Kulim Industrial Estate, 09000 Kulim  
Kedah Darul Aman, Malaysia.

T. +604-4945123  
F. +604-4891980



## Certificate Of Conformity

We declare that the following Product,

Style Number:	55 - 108
Description :	Isolator Gloves 10R2032A
Material Identification:	Natural Rubber Latex
Batch Number:	14120101C1
Shelf Life:	35 months

is in conformity with the following standards or other normative documents:

FDA positive list CFR Vol. 21.

Directive 89/686/EEC EC Type Test Certificate 03213889

EN420:2003+A1:2009: Protective Gloves –General Requirements

EN388:2003: Gloves for Protection against Mechanical Risk

EN374-1:2003 (low): Protective Glove against Chemicals and Micro-organism

LK Khoo  
Quality Assurance Manager  
Date : 16 July 2015

Ansell Industrial & Specialty Gloves Malaysia Sdn Bhd  
(Company No. 038030-K)  
(Formerly known as Marigold Industrial (Malaysia) Sdn. Bhd.)  
P.O. Box 7, 1A & 1B, Lorong Perusahaan 1  
Kulim Industrial Estate, 09000 Kulim  
Kedah Darul Aman, Malaysia.

T. +604-4945123  
F. +604-4891980



## Certificate Of Conformity

We declare that the following Product,

Style Number:	55 – 109
Description :	Isolator Gloves 10R3032A
Material Identification:	Natural Rubber Latex
Batch Number:	14082601C1
Shelf Life:	35 months

is in conformity with the following standards or other normative documents:

FDA positive list CFR Vol. 21.

Directive 89/686/EEC EC Type Test Certificate 03213890

EN420:2003+A1:2009: Protective Gloves –General Requirements

EN388:2003: Gloves for Protection against Mechanical Risk

EN374-1:2003 (low): Protective Glove against Chemicals and Micro-organism

LK Khoo  
Quality Assurance Manager  
Date: 16 July 2015

Ansell Industrial & Specialty Gloves Malaysia Sdn Bhd  
(Company No. 038030-K)  
(Formerly known as Marigold Industrial (Malaysia) Sdn. Bhd.)  
P.O. Box 7, 1A & 1B, Lorong Perusahaan 1  
Kulim Industrial Estate, 09000 Kulim  
Kedah Darul Aman, Malaysia.

T. +604-4945123  
F. +604-4891980



## Certificate Of Conformity

We declare that the following Product,

Style Number:	55 - 110
Description :	Isolator Gloves 12R2032A
Material Identification:	Natural Rubber Latex
Batch Number:	14030012C1
Shelf Life:	35 months

is in conformity with the following standards or other normative documents:

FDA positive list CFR Vol. 21.

Directive 89/686/EEC EC Type Test Certificate 03213889

EN420:2003+A1:2009: Protective Gloves –General Requirements

EN388:2003: Gloves for Protection against Mechanical Risk

EN374-1:2003 (low): Protective Glove against Chemicals and Micro-organism

LK Khoo  
Quality Assurance Manager  
Date : 16 July 2015

Ansell Industrial & Specialty Gloves Malaysia Sdn Bhd  
(Company No. 038030-K)  
(Formerly known as Marigold Industrial (Malaysia) Sdn. Bhd.)  
P.O. Box 7, 1A & 1B, Lorong Perusahaan 1  
Kulim Industrial Estate, 09000 Kulim  
Kedah Darul Aman, Malaysia.

T. +604-4945123  
F. +604-4891980



## Certificate Of Conformity

We declare that the following Product,

Style Number:	55 – 111
Description :	Isolator Gloves 12R3032A
Material Identification:	Natural Rubber Latex
Batch Number:	14111302C1
Shelf Life:	35 months

is in conformity with the following standards or other normative documents:

FDA positive list CFR Vol. 21.

Directive 89/686/EEC EC Type Test Certificate 03213890

EN420:2003+A1:2009: Protective Gloves –General Requirements

EN388:2003: Gloves for Protection against Mechanical Risk

EN374-1:2003 (low): Protective Glove against Chemicals and Micro-organism

LK Khoo  
Quality Assurance Manager  
Date: 16 July 2015

Ansell Industrial & Specialty Gloves Malaysia Sdn Bhd  
(Company No. 038030-K)  
(Formerly known as Marigold Industrial (Malaysia) Sdn. Bhd.)  
P.O. Box 7, 1A & 1B, Lorong Perusahaan 1  
Kulim Industrial Estate, 09000 Kulim  
Kedah Darul Aman, Malaysia.

T. +604-4945123  
F. +604-4891980



## Certificate Of Conformity

We declare that the following Product,

Style Number:	55 - 113
Description :	Isolator Gloves 8R2032M
Material Identification:	Natural Rubber Latex
Batch Number:	15061802C1
Shelf Life:	35 months

is in conformity with the following standards or other normative documents:

FDA positive list CFR Vol. 21.

Directive 89/686/EEC EC Type Test Certificate 03213889

EN420:2003+A1:2009: Protective Gloves –General Requirements

EN388:2003: Gloves for Protection against Mechanical Risk

EN374-1:2003 (low): Protective Glove against Chemicals and Micro-organism

LK Khoo  
Quality Assurance Manager  
Date: 16 July 2015

## BSE/TSE Declaration

Ansell

-

Corporate Offices  
111 Wood Avenue South, Suite 210  
Iselin, NJ 08830  
United States

T + 1 732 345 5400

F + 1 732 219 5114

[www.ansell.com](http://www.ansell.com)

### TSE / BSE Statement for Alpha Tec Isolator Gloves

All Ansell isolator glove products do not contain any raw materials produced from, or substances derived of animal origin. Furthermore, these products are not derived from specific-risk materials as defined in European Commission Decision 97/534/EC.

The manufacturing process does not use any ingredient of animal origin nor do our products come in contact with animal products during storage and transportation.

I hereby confirm that the product(s) listed below do not contain any Transmissible Spongiform Encephalopathy (=TSE) sources and using this glove would not cause any diseases such as BSE (Bovine Spongiform Encephalopathy).

Product Name	Item Number
Alpha Tec Isolator Glove EPDM	85-500, 501, 502, 503, 504 & 505
Alpha Tec Isolator Glove EPDM Plus	85-600, 601 & 602
Alpha Tec Isolator Glove CSM	85-300, 301, 302, 303, 304, 305
Alpha Tec Isolator Glove Latex	55-100, 101, 102, 103, 104, 105, 106, 107, 108, 109, 110, 111, 112,113
Alpha Tec Isolator Glove Neoprene	55-300, 301, 302, 303, 304, 305, 306, 307, 308, 309

Regards,



Donald J Cronk  
Manager of Regulatory Affairs and Technical Services

[don.cronk@ansell.com](mailto:don.cronk@ansell.com)

## FDA Positive Statement

Ansell

-

Corporate Offices  
111 Wood Avenue South, Suite 210  
Iselin, NJ 08830  
United States

T + 1 732 345 5400

F + 1 732 219 5114

[www.ansell.com](http://www.ansell.com)

Re: FDA Positive Statement

This letter certifies that the product(s) listed below are in full compliance with FDA Food Contact Regulations (FDA Positive List) 21 CFR 177 INDIRECT FOOD ADDITIVES: POLYMERS & Part 110.10 CURRENT GMP IN MANUFACTURING, PACKING OR HOLDING HUMAN FOOD.

Product Name	Item Number
Alpha Tec Isolator Glove EPDM	85-500, 501, 502, 503, 504 & 505
Alpha Tec Isolator Glove EPDM Plus	85-600, 601 & 602
Alpha Tec Isolator Glove Latex	55-100, 101, 102, 103, 104, 105, 106, 107, 108, 109, 110, 111, 113
Alpha Tec Isolator Glove Neoprene	55-300, 301, 302, 303, 304, 305, 306, 307, 308, 309

Regards,



Don Cronk  
Regulatory Affairs Manager  
Email: [don.cronk@ansell.com](mailto:don.cronk@ansell.com)

## Allergen Statement

Ansell

-

Corporate Offices  
111 Wood Avenue South, Suite 210  
Iselin, NJ 08830  
United States

T + 1 732 345 5400

F + 1 732 219 5114

[www.ansell.com](http://www.ansell.com)

### Allergen Statement

<b>55-100</b>	<b>55-104</b>	<b>55-108</b>	<b>55-113</b>
<b>55-101</b>	<b>55-105</b>	<b>55-109</b>	
<b>55-102</b>	<b>55-106</b>	<b>55-110</b>	
<b>55-103</b>	<b>55-107</b>	<b>55-111</b>	

This is to confirm that the styles listed above do contain the following materials:

1. Allergenic protein of natural rubber latex
2. Zinc Diethyldithiocarbamate
3. Parabens

We further confirm the products do not contain the following items:

1. Animal derivative material
2. Cornstarch
3. Lactose
4. Nickel

The below materials are not used intentionally in our formulations but they have not been tested specifically for the content:

1. Gluten
2. Nuts
3. Egg/Protein
4. Soy
5. Fish
6. Metabisulphite
7. Melamine

Regards,



Donald J. Cronk  
Regulatory Affairs Manager  
Single Use GBU  
Email: [don.cronk@ansell.com](mailto:don.cronk@ansell.com)



## Permeation Breakthrough Time

Chemical	Neoprene Medium Weight (0.51 mm)	Neoprene Heavy Weight (0.76 mm)	Latex Light Weight (0.51 mm)	Latex Heavy Weight (0.76 mm)
<b>SOLVENTS</b>				
Acetic Acid	6	6	4	3
Acetone (2-Propanone)	1	2	0	1
Acetonitrile	3	4	0	0
C12/C13 alkanes	6	6	2	3
Chloroform	1	1	0	0
Dichloromethane (Methylene chloride)	0	0	0	0
Diethylamine	0	1	0	0
Diethylether (Ether)	1	1	0	0
Ethylacetate	1	1	0	1
Formic Acid	6	6	4	5
Heptane	4	6	0	0
Hexane	2	3	0	0
Methyl Ethyl Ketone (2-Butanone, MEK)	1	1	0	1
PAH's (Polycyclic aromatic hydrocarbons)	1	1	0	0
Sodium Hydroxide, NaOH 40%	6	6	6	6
Sulfuric acid 96%	4	4	3	3
Tetrahydrofurane (THF)	1	5	3	4
Toluene	1	1	0	0
<b>DISINFECTANTS</b>				
1-propanol (Propylalcohol)	6	6	2	3
Deconclean	6	6	6	6
DeconSpore 200 Plus	6	6	6	6
Ethanol (Ethylalcohol)	6	6	1	3
Hydrogen Peroxide 30%	6	6	4	6
Isopropylalcohol IPA (2-propanol)	6	6	3	4
LpH se	6	6	6	6
Methanol	6	6	2	3
SporeKlenz	6	6	6	6
Vesphene Ilse	6	6	6	6

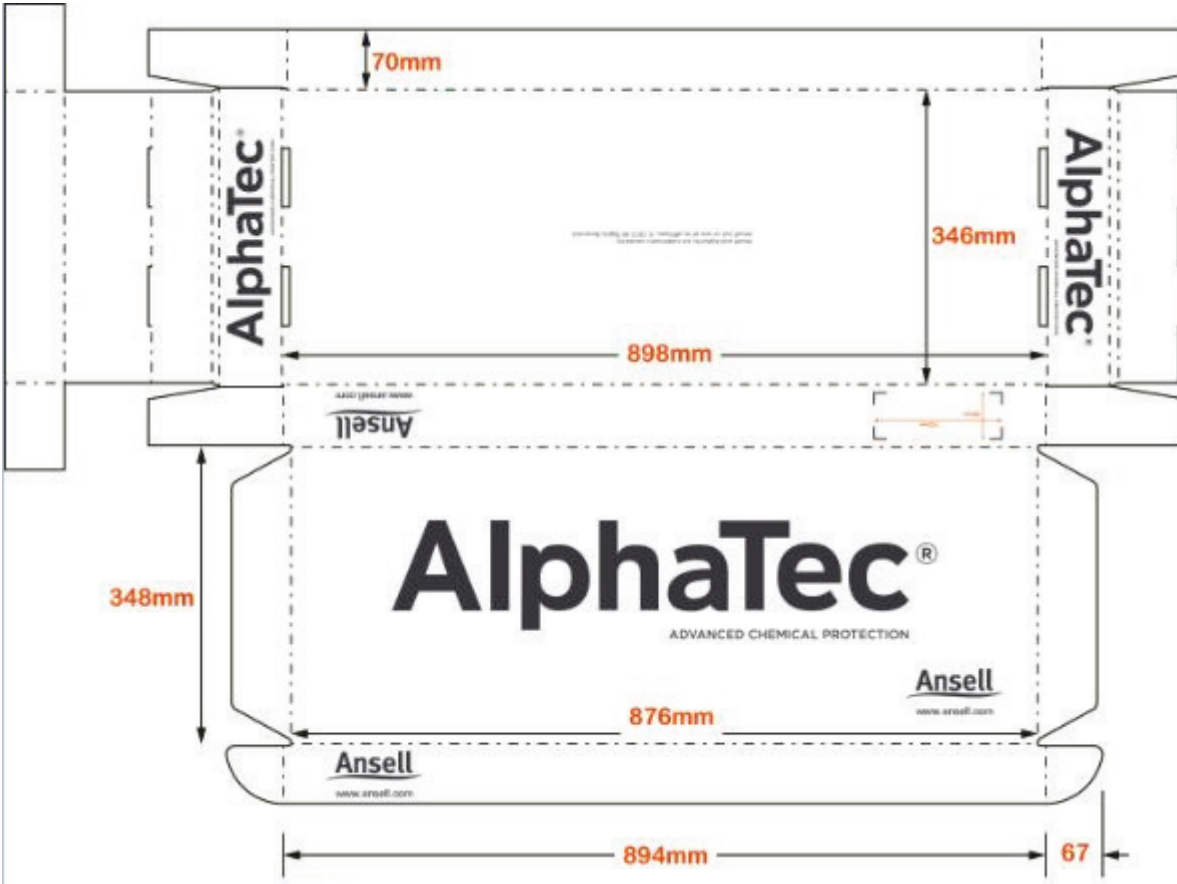
Permeation Breakthrough Times According to EN374 (Minutes)


0	1	2	3	4	5	6
< 10	10-30	30-60	60-120	120-240	240-480	> 480
Not Recommended	Splash Protection	Medium Protection	High Protection			

## Packaging Data

Style	Size	External ID	UOM	Quantity per case	Case Wt. Kg	Case Dimensions (in mm - L x D x H)	Inner Bar Code	Outer Case Bar Code
55-100	8	55100080	1 pair packed in black polybag	10 pairs	4.200	L:880 X W: 346 X H: 70MM	(01) 0076490045036	(01)20076490045030
55-100	9	55100090	1 pair packed in black polybag	10 pairs	3.570	L:880 X W: 346 X H: 70MM	(01) 0076490045043	(01)20076490045047
55-100	10	55100100	1 pair packed in black polybag	10 pairs	4.700	L:880 X W: 346 X H: 70MM	(01) 0076490045050	(01)20076490045054
55-101	8	55101080	1 pair packed in black polybag	10 pairs	3.870	L:880 X W: 346 X H: 70MM	(01) 0076490045067	(01)20076490045061
55-101	9	55101090	1 pair packed in black polybag	10 pairs	4.170	L:880 X W: 346 X H: 70MM	(01) 0076490045074	(01)20076490045078
55-101	10	55101100	1 pair packed in black polybag	10 pairs	5.050	L:880 X W: 346 X H: 70MM	(01) 0076490045081	(01)20076490045085
55-102	9	55102090	1 pair packed in black polybag	10 pairs	4.700	L:880 X W: 346 X H: 70MM	(01) 0076490045098	(01)20076490045092
55-102	10	55102100	1 pair packed in black polybag	10 pairs	3.870	L:880 X W: 346 X H: 70MM	(01) 0076490045104	(01)20076490045108
55-103	9	55103090	1 pair packed in black polybag	10 pairs	4.470	L:880 X W: 346 X H: 70MM	(01) 0076490045111	(01)20076490045115
55-103	10	55103100	1 pair packed in black polybag	10 pairs	5.650	L:880 X W: 346 X H: 70MM	(01) 0076490045128	(01)20076490045122
55-104	9	55104090	1 pair packed in black polybag	10 pairs	5.700	L:880 X W: 346 X H: 70MM	(01)0076490045135	(01)20076490045139
55-104	10	55104100	1 pair packed in black polybag	10 pairs	5.950	L:880 X W: 346 X H: 70MM	(01)0076490045142	(01)20076490045146
55-105	9	55105090	1 pair packed in black polybag	10 pairs	6.850	L:880 X W: 346 X H: 70MM	(01)0076490045159	(01)20076490045153
55-105	10	55105100	1 pair packed in black polybag	10 pairs	5.870	L:880 X W: 346 X H: 70MM	(01)0076490045166	(01)20076490045160
55-106	9	55106090	1 pair packed in black polybag	10 pairs	5.070	L:880 X W: 346 X H: 70MM	(01)0076490045173	(01)20076490045177
55-106	10	55106100	1 pair packed in black polybag	10 pairs	5.170	L:880 X W: 346 X H: 70MM	(01)0076490045180	(01)20076490045184
55-107	9	55107090	1 pair packed in black polybag	10 pairs	5.870	L:880 X W: 346 X H: 70MM	(01)0076490045197	(01)20076490045191
55-107	10	55107100	1 pair packed in black polybag	10 pairs	6.370	L:880 X W: 346 X H: 70MM	(01)0076490045203	(01)20076490045207
55-108	9	55108090	1 pair packed in black polybag	10 pairs	6.470	L: 880 X W: 480 X H: 70MM	(01) 0076490045210	(01)20076490045214
55-108	10	55108100	1 pair packed in black polybag	10 pairs	6.470	L: 880 X W: 480 X H: 70MM	(01) 0076490045227	(01)20076490045221
55-109	10	55109100	1 pair packed in black polybag	10 pairs	7.700	L: 880 X W: 480 X H: 70MM	(01) 0076490045234	(01)20076490045238
55-110	9	55110090	1 pair packed in black polybag	10 pairs	8.300	L: 880 X W: 480 X H: 70MM	(01)0076490045241	(01)20076490045245
55-110	10	55110100	1 pair packed in black polybag	10 pairs	7.260	L: 880 X W: 480 X H: 70MM	(01)0076490045258	(01)20076490045252
55-111	9	55111090	1 pair packed in black polybag	10 pairs	9.360	L: 880 X W: 480 X H: 70MM	(01)0076490045265	(01)20076490045269
55-111	10	55111100	1 pair packed in black polybag	10 pairs	9.360	L: 880 X W: 480 X H: 70MM	(01)0076490045272	(01)20076490045276
55-113	10	55113100	1 pair packed in black polybag	10 pairs	4.470	L:880 X W: 346 X H: 70MM	(01) 0076490045296	(01)20076490045290

## Packaging and Label Explanation



<b>Ansell</b> 123456		<b>P/N</b> 114948
		<b>LOT</b> 1310C1
ALPHATEC® 55-104 8R2032A SIZE 10		🕒 2018-10 📅 2013-10
<b>QTY</b> 1	PR ASPN: 256269	SZ: 10
<b>PRODUCT OF MALAYSIA</b>		
 (01) 0076490045142 (17) 181000 (10) 1310C1 (92) 114948		

- 10** \_\_\_\_\_ Size
- LOT 1310C1** \_\_\_\_\_ Lot #
- 📅 2013-10** \_\_\_\_\_ Manufacturing Date
- 🕒 2018-10** \_\_\_\_\_ Expiry Date
-  \_\_\_\_\_ Bar Code

**Shelflife Statement****Shelflife Statement**

Current accelerated aging studies suggest that there is a minimum three-year shelf life for the products listed below. However, the shelf life of the product can be affected by storage conditions. Store in a dry, cool, well-ventilated area. When possible shield open box from direct sunlight, florescent lighting and x-rays. Improper storage will decrease usable life.

If you notice any signs of aging or improper storage such as discoloration, tearing, holes or degradation we would advise that you discard and replace the gloves.

<b>Product Name</b>	<b>Item Number</b>
AlphaTec Isolator Glove EPDM	85-500, 501, 502, 503, 504 & 505
AlphaTec Isolator Glove EPDM Plus	85-600, 601 & 602
AlphaTec Isolator Glove CSM	85-300, 301, 302, 303, 304 & 305
AlphaTec Isolator Glove Latex	55-100, 101, 102, 103, 104, 105, 106, 107, 108, 109, 110, 111, 113
AlphaTec Isolator Glove Neoprene	55-300, 301, 302, 303, 304, 305, 306, 307, 308, 309

Best regards,



Donald J. Cronk  
Manager  
Regulatory Affairs and Technical Services

## Quality Management ISO 9001 2008

Certificate SG02/20011

The management system of

### Ansell Industrial & Specialty Gloves Malaysia Sdn. Bhd.

1A & 1B, Lorong Perusahaan 1  
Kulim Industrial Estate  
09000 Kulim, Kedah  
MALAYSIA

has been assessed and certified as meeting the requirements of

## ISO 9001:2008

For the following activities

**Design and Manufacture of Industrial and Consumer Gloves which  
meet the relevant Personal Protective Equipment (PPE) Standards**

Further clarifications regarding the scope of this certificate and the applicability of  
ISO 9001:2008 requirements may be obtained by consulting the organisation

This certificate is valid from 11 October 2014 until 10 October 2017 and  
remains valid subject to satisfactory surveillance audits.  
Re certification audit due before 19 August 2017  
Issue 8. Certified since 23 September 2002

Authorised by

SGS United Kingdom Ltd Systems & Services Certification  
Rossmore Business Park Ellesmere Port Cheshire CH65 3EN UK  
t +44 (0)151 350-6666 f +44 (0)151 350-6600 [www.sgs.com](http://www.sgs.com)

SGS 9001-8 01 0614

Page 1 of 1

# SGS



0005



This document is issued by the Company subject to its General Conditions of Certification Services accessible at [www.sgs.com/terms\\_and\\_conditions.htm](http://www.sgs.com/terms_and_conditions.htm). Attention is drawn to the limitations of liability, indemnification and jurisdictional issues established therein. The authenticity of this document may be verified at <http://www.sgs.com/en/Our-Company/Certified-Client-Directories/Certified-Client-Directories.aspx>. Any unauthorized alteration, forgery or falsification of the content or appearance of this document is unlawful and offenders may be prosecuted to the fullest extent of the law.

## Instructions for Use

	EN	ES	IT	NL	DA	NO	AR
	FR	DE	PT	EL	FI	SV	RU
CS	HU	LV	PL	BG	SL	KO	TH
ET	LT	MT	RO	SK	TR	MS	ZH

CR



### Europe

Ansell Healthcare Europe NV  
Blvd International, 55  
1070 Brussels, Belgium  
☎ +32 2 528 74 00 📠 +32 2 528 74 01  
www.anselleurope.com

### United States

Ansell Healthcare  
200 Schulz Drive, Red Bank NJ 07701  
☎ +1 800 800 0444 📠 +1 800 800 0445  
www.ansellpro.com

### Japan

Ansell Japan Ltd.  
Tokyo, Japan  
☎ +81 3 5805 3781

### Malaysia

Ansell Services (Asia) Sdn Bhd  
☎ +60 3 5541 9797

### Canada

105 Lauder Street, Cowansville J2K 2K8  
☎ +1 800 363 8340

### Australia

Ansell Limited  
Level 3, 678 Victoria Street,  
Richmond, Vic, 3121  
☎ +61 1800 337 041 📠 +61 1800 803 578  
www.ansellasiapacific.com

## INSTRUCTIONS FOR USE CATEGORY III / COMPLEX DESIGN

EN

## ANSELL CHEMICAL RESISTANT GLOVES

### A. Use

This Instruction for Use note is to be used in combination with the specific information that is mentioned on or inside each packaging enclosure.  
These gloves are designed to protect the hands mainly against chemical risks.  
They are in conformity with, and are marked per the requirements of, the European Directive 89/686/EEC and its amendments. They also comply with the applicable European Standards.  
Gloves which are accompanied with the pictogram which designates contact with foodstuffs, are also in conformity with the European Regulations 1935/2004 and 2023/2006 as well as with all applicable National Regulations for Food-contact materials.  
Please ensure the gloves are used only for the designated purposes.

Explanation of pictograms:

 A B C D EN 388: 2003	Protection from mechanical risks A: Abrasion resistance B: Cut resistance C: Tear resistance D: Puncture resistance	 A B C D E FGHJKL EN 374: 2003	Chemical breakthrough time > 30 minutes against: A = methanol B = acetone C = acetonitrile D = dichloromethane E = carbon disulfide F = toluene G = diethylamine H = tetrahydrofuran I = ethyl acetate J = n-heptane K = sodium hydroxide, 40% L = sulphuric acid, 96%
 EN 374: 2003	Liquidproof gloves Chemical resistance data available upon request	 EN 374: 2003	Protection against micro-organisms (AQL ≤ 1.5)
 A B C EN 511: 2006	Protection from cold A: Convective cold B: Contact cold C: Water penetration	 EN 421	Protection against radio-active contamination
		 A B C D E F EN 407: 2004	Protection against heat A: Flammability B: Contact heat C: Convective heat D: Radiant heat E: Small splashes of molten metal F: Large quantities of molten metal
			Suitable for contact with foodstuffs

**Warning!** The information given in the pictograms or data provided on chemical resistant breakthrough times is based on lab tests and is therefore advisory only, since it does not necessarily reflect the actual duration of use in the workplace. EC-Type examination certificate from Centexbel Belgium (I.D. 0493), Technologiepark 7, B-9052 Zwijnaarde.

For more detailed information on the glove's performance and to obtain a copy of the Conformity Declaration, please consult Ansell.

### B. Precautions for use

- Before usage, inspect the gloves for any defects or imperfections. If the gloves are ripped or punctured during use, dispose of them immediately. If in doubt, do not use the gloves, get a new pair.
- It is essential to keep all chemicals from contact with the skin, even if they are thought to be harmless. Therefore use gloves which are rated with a protection index of 6 or with an excellent degradation resistance rating. In all other cases, the gloves should be used for splash protection or short contact only. For more details regarding chemical suitability, please contact the Ansell Technical department.
- Avoid wearing gloves which are dirty on the inside – they may irritate the skin, causing dermatitis or worse.
- Contaminated gloves should be cleaned or washed before removal.
- Ensure the chemicals cannot enter via the cuff.
- The gloves should not be used for protection against serrated blades or when there is a risk of entanglement with moving machine parts.
- The gloves should not come in contact with a naked flame.
- Glove type versions with a glove length below 260 mm are 'Fit for Special Purpose gloves' because they are to be used to protect the hand ONLY from chemical splashes when handling chemicals. Do not use the gloves when protection in the cuff area is needed.
- Gloves shall not be used for protection against ionising radiation nor for use in containment enclosures.
- Not all gloves that are suitable for contact with foodstuffs can be used against all foodstuffs. Some gloves may show excessive migration towards certain types of foodstuffs. To know which restrictions apply and for which specific foodstuffs the gloves can be used, please obtain advice from the Ansell technical department or consult the Ansell Food Conformity declaration.
- If gloves are marked, the printed surfaces shall not come in contact with food.

### C. Ingredients / Hazardous ingredients

Some gloves might contain ingredients which are known to be a possible cause of allergies in sensitised persons, who may develop irritant and/or allergic contact reactions. If allergic reactions should occur, obtain medical advice immediately. For more information, please contact Ansell's Technical department.

### D. Care instructions

**Storage:** Keep away from direct sunlight; store in a cool dry place.  
Keep away from ozone sources or naked flame.

**Cleaning:** Chemical Resistant gloves are not designed to be laundered.

### E. Disposal

Used gloves may be contaminated with infectious or other hazardous materials.  
Dispose of according to Local Authority Regulations. Landfill or incinerate under controlled conditions.

## Product Portfolio

Material	Style #	Port Size (inches)/(mm)	Thickness (mil)	Length (inches)/(mm)	Hand Sizes
EPDM +	85-600	8" (200mm)	20 /0.51	31.5/800	9.5, 11
	85-601	10" (250 mm)	20 /0.51	31.5/800	9.5, 11
	85-602	12" (300mm)	20 /0.51	31.5/800	9.5, 11
EPDM	85-500	8" (200 mm)	16/0.4	31.5/800	9.5, 11
	85-501	8" (200 mm)	24/0.6	31.5/800	9.5, 11
	85-502	10" (250 mm)	16/0.4	31.5/800	9.5, 11
	85-503	10" (250 mm)	24/0.6	31.5/800	9.5, 11
	85-504	12" (300mm)	16/0.4	31.5/800	9.5, 11
	85-505	12" (300mm)	24/0.6	31.5/800	9.5, 11
CSM	85-300	8" (200 mm)	16/0.4	31.5/800	9.5, 11
	85-301	8" (200 mm)	24/0.6	31.5/800	9.5, 11
	85-302	10" (250 mm)	16/0.4	31.5/800	9.5, 11
	85-303	10" (250 mm)	24/0.6	31.5/800	9.5, 11
	85-304	12" (300mm)	16/0.4	31.5/800	9.5, 11
	85-305	12" (300mm)	24/0.6	31.5/800	9.5, 11
NRL	55-100	6" (150mm)	20/0.51	28/711	8,9,10
	55-101	6" (150mm)	30/0.76	28/711	8,9,10
	55-102	7" (180 mm)	20/0.51	28/711	9, 10
	55-103	7" (180 mm)	30/0.76	28/711	9, 10
	55-104	8" (200 mm)	20/0.51	32/813	9, 10
	55-105	8" (200 mm)	30/0.76	32/813	9, 10
	55-106	9" (230 mm)	20/0.51	31/787	9, 10
	55-107	9" (230 mm)	30/0.76	31/787	9, 10
	55-108	10" (250mm)	20/0.51	32/813	9, 10
	55-109	10" (250mm)	30/0.76	32/813	10
	55-110	12" (300mm)	20/0.51	32/813	9, 10
	55-111	12" (300mm)	30/0.76	32/813	9, 10
	55-113	8" (200mm)	20/0.51	32/813	10
Neoprene	55-300	6" (150 mm)	20/0.51	28/711	8,9,10
	55-301	7" (180 mm)	20/0.51	28/711	9,10
	55-302	8" (200 mm)	20/0.51	32/813	9,10
	55-303	8" (200 mm)	30/0.76	32/813	9,10
	55-304	9" (230 mm)	20/0.51	32/813	9,10
	55-305	10" (250 mm)	20/0.51	32/813	9,10
	55-306	10" (250 mm)	30/0.76	32/813	9,10
	55-307	12" (300 mm)	20/0.51	32/813	9,10
	55-308	12" (300 mm)	30/0.76	32/813	9,10
55-309	Oval	13/0.33	28/711	8.5	